



**BOYS & GIRLS CLUBS  
OF AMERICA**

***SUMMARY OF FINDINGS***  
***Members' and Parents' Surveys***  
***For***  
***Boys and Girls Club of Santa Monica***

September 2010



[www.damooei.com](http://www.damooei.com)

## Acknowledgements

We would like to take this opportunity and thank Mr. Aaron Young, Chief Executive Officer of the Santa Monica Boys & Girls Clubs, for giving us the opportunity of preparing this report for the club. We acknowledge and are grateful for the support of the staff in taking time, following the instruction for data collection, and making sure that the data is given to us in a timely manner. Without their help it would not be possible to bring this study to a positive conclusion.

We are indebted to club members and their parents for spending time answering all the detailed questions that were asked in the surveys. The insight they provided enabled us to find what works and what can be done to further improve the efficacy of services provided by the club.

**Jamshid Damooei, Ph.D.**  
**Professor of Economics and Chair**  
**Department of Economics, Finance, and Accounting**  
**California Lutheran University**  
**President**  
**Damooei Global Research**  
**Tel: (805) 493-3357**  
[Damooei@callutheran.edu](mailto:Damooei@callutheran.edu)

**Alidad A. Damooei**  
**Vice President**  
**Damooei Global Research**  
**Tel: (805) 402-9999**  
[aad@damooei.com](mailto:aad@damooei.com)

## Contents

1.0)	Introduction: .....	5
2.0)	Summary of the LA Alliance Economic Impact Study .....	6
	Economic Impact Multipliers .....	8
	Lifetime Gain from High School Graduation Multiplier .....	8
	Lifetime Savings from Prevented Teen Pregnancies and Births Multiplier .....	9
	Criminal Justice System Savings Multiplier .....	9
	Parental Earnings Multiplier .....	10
	Regional Output on the County Level .....	11
	Overview of Impact Areas.....	12
	High School Graduation Rates .....	12
	Reduction in Teenage Motherhood .....	12
	Juvenile Crime Prevention .....	14
	Improved Parental Income and Productivity .....	14
	Economic Impact of Clubs' Operational and Capital Expenditures.....	15
	Value of Volunteer Labor .....	16
	Important but Unquantifiable Impacts of the Boys & Girls Clubs within Los Angeles County .....	17
3.0)	Summary of the Findings from Survey of the Members of the Boys and Girls Club of Santa Monica .....	19
	3.1) Demographic Characteristics of Members of the Boys and Girls Club of Santa Monica ...	19
	3.2) Santa Monica Club Member Opinions regarding Programs and Sense of Belonging .....	21
	3.3) Educational Impact and Club Member Attitudes and Aspirations.....	26
	3.4) Extent and Impact Physical Education Within the Club .....	30
4.0)	Summary of the Findings from Survey of Parents of the Club Members of the Boys and Girls Club of Santa Monica.....	33
	4.1) Demographic and Socio-Economic Characteristics of Parents of Members of the Boys and Girls Club of Santa Monica.....	34
	4.2) Family Need for Club Services .....	41
	4.3) Impact of Clubs on Child's Self Confidence and Social Aptitude .....	43
	4.4) Impact of Clubs on Academic Performance and Aspiration .....	45
	4.5) Club's Impact on Children's Choice of a Better Lifestyle .....	50

4.6) Impact of Club on Family's Economic Prosperity.....	52
4.7) Feeling of Safety of Children While at the Club .....	54

## **1.0) Introduction:**

In the process of collecting data for the economic impact study of the Los Angeles Alliance of Boys & Girls Clubs, surveys were administered to club members and parents of all 27 clubs forming the alliance. This report provides a summary of the data collected from the Boys & Girls Club of Santa Monica.

The economic impact study began by collecting pertinent in-house information on a number of important pieces of information concerning the budget, personnel, programming and membership of each of the 27 clubs in the alliance. We used this information to calculate the sample size for two separate surveys of club members and parents. This report summarizes the data gathered through these two surveys in the Santa Monica clubs. The information provides a clear and very interesting picture of the way vital stakeholders of the Santa Monica clubs think about the organization and its impact on their lives.

We prepared this report based on the request of the Boys & Girls Clubs of Santa Monica so that they can use the outcomes of the surveys for their own communication with clubs members, parents, collaborators, stakeholders, and donors. Moreover, it can serve as a vital management tool; helping club staff understand areas of strength and in need of further improvement.

Section two of this report contains the executive summary of the economic impact study for the entire Los Angeles Alliance. Sections three and four provide a summary of the findings found through the club member and parent surveys which is specific and applicable only to the Boys & Girls Club of Santa Monica.

## 2.0) Summary of the LA Alliance Economic Impact Study

The Boys & Girls Clubs within Los Angeles County serves a diverse community of nearly 102,000 youth at 117 sites within Los Angeles County managed by one of the 27 Boys & Girls Club organizations. Over 67,000 of these youth have joined as a member of a local Boys & Girls Club across Los Angeles. Every day, tens of thousands of students end their school day by heading towards the Clubs. These youth are able to make friends and engage in programming that ranges from educational to recreational. Without the Clubs, many of these youngsters would be without proper supervision, at-risk, and susceptible to negative influences and threats. In some other families, a parent would have to stay home from work to provide such supervision, but this would reduce the family's earnings and economic security. The Clubs are an important social asset serving such working families.

The value of the Boys & Girls Clubs within Los Angeles County also extends beyond the direct benefits enjoyed by parents and Club members. The regional community enjoys an important service by having these youth positively engaged and away from trouble and/or mischief in the afternoon and early evening.

While it is easy to appreciate the good work of the Clubs in qualitative and emotional or social terms, it requires additional analysis to understand the monetary and economic value of the organization in the community. At first glance, the Clubs can be praised for the social benefits that they create in the region. However, by digging deeper, it becomes readily apparent that these social benefits create tremendous economic value in the community.

**This report provides an exhaustive enumeration of the many ways in which the Boys & Girls Clubs within Los Angeles County create economic value in Los Angeles County and the State of California. Many of these impacts include “positive externalities.”** As non-profit organizations, the Clubs provide services directly and indirectly to various community stakeholders. There are three primary beneficiaries of the Club: Club members, the parents of Club members, and the community.

Club members receive perhaps the greatest benefit of all from their participation in the Clubs. When compared with their peers who do not attend the Club, they are more likely to graduate from high school and less likely to engage in risky behaviors resulting in juvenile arrest or

teenage motherhood. The exact mechanisms by which Club members outperform their peers are uncertain. The consistency of the trend suggests that membership in the Clubs may play a vital role in explaining the behavior patterns of the group. By having access to a safe and nurturing environment, these youth avoid negative influences. Moreover, special services provide additional support to Club members. For instance, tutoring programs at some Club sites give Club members a competitive edge in school which can generate long-term academic success.

While Club members receive the most from their participation, others benefit as well. For instance, parents of Club members are able to be more productive since they do not have to supervise their children after school. Many parents are able to work or pursue further education as a result of the services provided by the Boys & Girls Clubs within Los Angeles County.

Many of these benefits to parents, Club members, and the community have an economic value. Using data collected through stakeholder surveys and a review of publicly available information, this report places a monetary value on many of these benefits. The value of all these economic benefits is simply tremendous. This report focused on the following mechanisms and services through which The Boys & Girls Clubs within Los Angeles County creates economic value in the region:

- Total employment and income impact of the Clubs through its annual expenditure including both operational and capital budgets.
- Impact of better education through higher graduation rates and the resulting improved lifetime earnings among youth who attend the Clubs on a regular basis as opposed to others who do not benefit from such services within the same socio-economic population in the same region.
- Lower teen pregnancy and motherhood rates which create economic savings.
- Impact of Clubs' enrichment programs that enable youth to resolve conflicts and become more peaceful with their own peers and others in their communities. This is measured by considering reductions in youth crime rates and the savings that it generates in the community.
- Learning healthy living and its impact in reducing obesity and related disease that leads to lower productivity and an increase in long-term chronic diseases.

- The ability of Club programs to help parents work and attend school in order to upgrade their skills.
- Strengthening and promoting volunteerism in the region.

For nearly all of these benefits, a monetary value was calculated. A summary of the analysis is presented below and categorized by the nature of the economic impact. Sections two and three of this report present the methodology developed and data used to calculate these values. Section four provides additional statistics on qualitative questions asked in Club member and parent surveys.

### Economic Impact Multipliers

One way to illustrate the impact of every dollar spent by the Boys & Girls Clubs within Los Angeles County is to compare the aggregate budget of the Boys & Girls Clubs with the positive economic impacts that it generates in the community. This framework can allow for a cost-benefit analysis that cogently illustrates the tremendous value of the Boys & Girls Clubs within Los Angeles County based on the findings of this study.

For this calculation, we will consider the economic impact on stakeholders including Club members, parents, and the community. The five areas considered include the impact of the Clubs on increased high school graduation rates, averted teenage pregnancies and births, reduced juvenile criminal activity, improved prospects for working parents, and regional output stimulus through productivity of budget and volunteer labor. The impact on high school graduation rates is as follows:

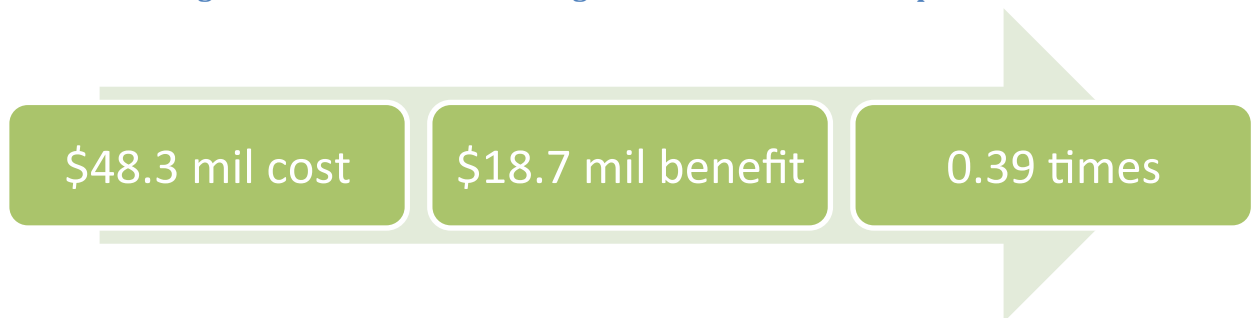
### Lifetime Gain from High School Graduation Multiplier





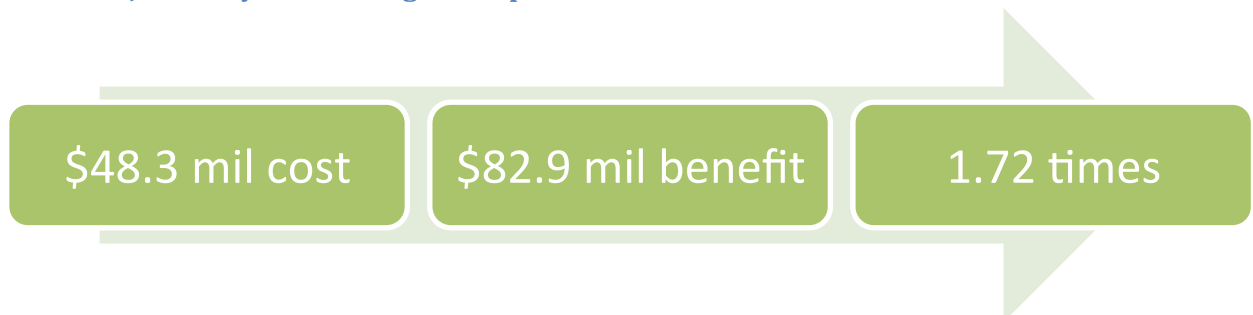
In the most recent class of graduating seniors, the Clubs generated a positive economic impact of \$185 million through increased lifetime earnings of these graduates influenced by the services of the Boys & Girls Clubs. When compared to the annual budget of the Boys & Girls Clubs within Los Angeles County (\$48.3 million) this generates a multiplier of 3.83; in other words, for every \$1 spent by the Clubs, \$3.83 of increased earnings is generated through the increased lifetime earnings of impacted Club members. Next, we consider the impact on teen pregnancies and births:

#### **Lifetime Savings from Prevented Teen Pregnancies and Births Multiplier**



We consider the fact that the Clubs generate a positive economic impact of \$18.7 million through savings to taxpayers and society for every teenager in this most recent year who waited until they are older to have children. Compared with the annual budget of the Boys & Girls Clubs within Los Angeles County, this generates a multiplier of 0.39; in other words, for every \$1 spent by the Clubs, \$0.39 is saved for taxpayers and the society on costs they would have incurred for teenage pregnancies and births on a yearly basis. Next, we consider the impact on juvenile crime:

#### **Criminal Justice System Savings Multiplier**



The Boys & Girls Clubs within Los Angeles County reduce juvenile crime rates by providing Club members a safe, nurturing environment and access to positive role models. The lower arrest rates among Club members generates a savings of \$82.9 million per year for taxpayers who support the criminal justice system. When compared to the annual budget of the Clubs, this generates a multiplier of 1.72; in other words, for every \$1 spent by the Boys & Girls Clubs within Los Angeles County, taxpayers save \$1.72 on expenditures for the criminal justice system annually. Finally, we consider the economic value that the Clubs generate by helping parents work.

### Parental Earnings Multiplier



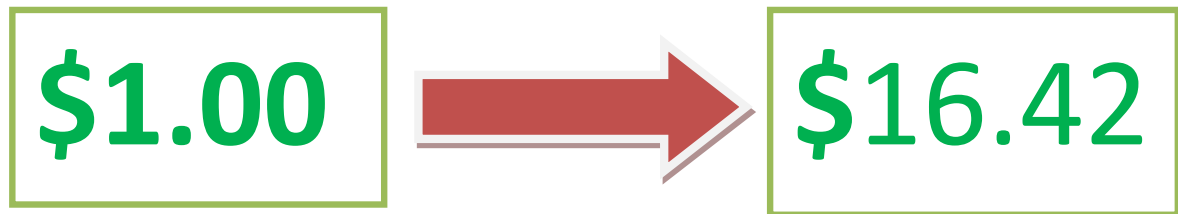
During the school hours, parents are free to work as their children are engaged by the school system. However, when the school bell rings and children leave the classroom, parents face a difficult and heart-wrenching decision: to continue working and leave their children with potentially inadequate supervision or to stop working and reduce their family's earnings. Both outcomes have their own dangers; however, the Boys & Girls Clubs within Los Angeles County help parents to avoid this difficult dichotomy. The Boys & Girls Clubs within Los Angeles County allow parents to continue being productive in the afternoon while having the satisfaction of knowing that their children are adequately supervised. Through a survey of parents, the study determined that \$429.2 million of additional annual earnings are generated for the parents of Club members who can continue working. Compared with the annual budget of the Clubs, this generates a multiplier of 8.89; in other words, for every \$1 spent by the Clubs, \$8.89 of earnings are generated by parents who can keep their jobs due to the services of the Club.

## Regional Output on the County Level



The direct, indirect, and induced regional output created through the expenditures and volunteer labor of the Boys & Girls Clubs total \$77.0 million across Los Angeles County. When compared to the budget of the Boys & Girls Clubs within Los Angeles County, this results in a multiplier of 1.59. On the state level, this multiplier is amplified.

Taken separately, each of these economic impacts is impressive on its own. However, when the economic impacts are summed together, the results are all the more impressive.



For every \$1 spent by the Clubs, The Boys & Girls Clubs within Los Angeles County generate \$16.42 of positive economic impacts for the community. This tremendous rate of return is a testament to the vital role the Clubs play in shaping the lives and futures of Club members and their parents.

Beyond the value of social services provided by the Clubs, The Boys & Girls Clubs within Los Angeles County stimulate the economy through their budgetary expenditures and volunteer programs. Just like a private business, Boys & Girls Clubs within Los Angeles County spend money on payroll and suppliers, thereby helping to stimulate the economy. Volunteers also further this productive capacity through a donation of labor that has similar productive qualities as a monetary donation. On the Los Angeles County level, the economic impact is as follows:

## Overview of Impact Areas

While multipliers provide an easy snapshot and illustration of the impact of the Boys & Girls Clubs within Los Angeles County, this section of the report provides an overview of the calculations used to derive these multipliers.

### High School Graduation Rates

As Club members, students are given a safe and nurturing after-school environment in which they can be free of distractions that can divert them from their academic pursuits. Moreover, various Club locations provide special services such as Power Hour which provides help with homework and access to tutoring services. Such programs give Club members a competitive advantage in school.

It is hard to put a monetary value on being a “better student.” However, the culmination of one’s academic abilities is manifested by the level of education attained by an individual; specifically, whether or not a student can complete high school. As such, in order to calculate the monetary value of improvements in the academic life of students, this report compared the graduation rates of Club members with their peers in school who do not participate in the Clubs. These comparisons were then combined with secondary research on the value of a high school diploma in terms of lifetime earnings. The results are as follows:

Percentage of students Passing CAHSEE* in Los Angeles County	Percentage of seniors attending Clubs passing CAHSEE	Additional number of students passing CAHSEE in Clubs	Total annual increase in annual wage and salary	Total work-life increase in earnings
57%	93%	668	\$6,472,252 per year	\$ 184,933,128

\* California High School Exit Exam

### Reduction in Teenage Motherhood

Teenage motherhood can cause a myriad of problems in the life of a young person. The difficulties that it can create are costly both for the teen mother, taxpayers, and society through the public programs that assist such young mothers. Any program that can reduce the likelihood of teenage parenthood will create a positive economic impact both for the potential parents and society.

First the savings to taxpayers and society are considered on an annual basis. This calculation averages the cost of teenage parenthood over the first thirteen years of parenthood. The savings are as follows:

<b>Female Club members between the ages of 15 and 19 who attend the Boys &amp; Girls Clubs within Los Angeles County more than 3 days a week</b>	<b>Rate of teen childbirth in a comparative community (per 1,000)</b>	<b>Rate of teen pregnancy among female Club members aged 15 to 19</b>	<b>Total number of teen childbirths averted</b>	<b>Estimated annual cost of teen pregnancy to taxpayers and society</b>	<b>Total annual costs saved for tax payers and society due to positive influence of Clubs</b>
5,207	34.02	2.69	163 female teens saved	\$8,806	\$1,435,378 Annually

While annual calculations are instructive, it is also important to consider the overall cost of each teen birth that is averted through the services of the Boys & Girls Clubs within Los Angeles County. This is the best way to understand the long-term impact of the teen pregnancies averted in any given year. The long-term cost savings are as follows:

<b>Female Club members between the ages of 15 and 19 who attend the Boys &amp; Girls Clubs within Los Angeles County more than 3 days a week</b>	<b>Rate of teen childbirth in a comparative community (per 1,000)</b>	<b>Rate of teen pregnancy among female Club members aged 15 to 19</b>	<b>Total number of teen childbirths averted</b>	<b>Estimated long-term cost saving for society and taxpayer for each teen birth averted</b>	<b>Total lifetime saving for taxpayer and society due to positive influence of Clubs</b>
5,207	34.02	2.69	163 female teens saved	\$114,474	\$18,659,262

### Juvenile Crime Prevention

When a crime is committed, society and the victims pay a very high price through the cost of the harm itself and the costs to the criminal justice system that has to prosecute and manage the criminals. Juvenile crime, in particular, burdens the criminal justice system due to the fact that its prosecution and management have a more rehabilitative focus. As such, programs that can prevent such crime are creating a positive economic benefit through the cost-savings that they create for society.

Those who attend the Boys & Girls Clubs are in a safe environment after school away from temptations that can lead to criminal activity. Moreover, the greatest proportion of juvenile crime has been found to occur between 3:00 and 4:00PM. These are hours during which the Boys & Girls Clubs within Los Angeles County stand as a safe haven for youths who want to be secure during these times of the day. The economic benefit of reduced juvenile crime amongst Club members is presented below:

Total number of juveniles saved from arrest	Annual cost of juvenile crimes per person in California	Annual cost of juvenile arrested at 45% of total cost per crime	Total saving per year for the state of California due to impact of Clubs
964	\$191,017	\$85,958	\$82,863,512

### Improved Parental Income and Productivity

The vast majority of parents whose children attend the Boys & Girls Clubs are working parents in the community. Without the Boys & Girls Clubs to supervise their children after school, many would have to reduce their own work and income. This loss of income hurts the parent and the community that loses their productivity.

The economic impact of helping these parents to continue working by providing low-cost, high-quality after-school supervision for their children is presented below:

Total number of families served by Boys & Girls Clubs within Los Angeles	Percentage of parents who believe that Boys & Girls Clubs within Los Angeles	Total number of parents who are able to work due to the Boys & Girls Clubs within	Average annual salary of those keeping their jobs due to the Boys & Girls Clubs within	Total annual earnings generated by parents due the Boys & Girls Clubs within Los Angeles

Angeles County	County enables them to keep their job	Los Angeles County	Los Angeles County	County
35,643	44.7%	15,932	\$26,939	\$ 429,192,148

### Economic Impact of Clubs' Operational and Capital Expenditures

In the midst of considering the impact of services provided by the Clubs, it is easy to forget that the Clubs are an organization that take in revenue and spend money to provide their services.

The combined budgets of all the Clubs Boys & Girls Clubs within Los Angeles County for capital and operational expenditures total nearly \$48.3 million. These expenditures support jobs both within the organization and beyond in companies that provide services to the Clubs.

The economic impact of these expenditures in Los Angeles County for the most recent fiscal year available is as follows:

	Economic Impact of Budgetary Expenditures in Los Angeles County					
	Direct	Indirect	Induced	TOTAL		
Output Impact	\$39,637,131	\$13,428,030	\$13,881,457	\$66,946,617		
Indirect Business Tax Impact	\$330,163	\$534,673	\$830,877	\$1,695,713		
Employment Impact	814	78	94	986		
Tax Impact	Employee Compensation	Proprietary Income	Household Expenses	Enterprises	Indirect Business Tax	TOTAL
	\$2,807,749	\$122,867	\$2,779,743	\$1,601,325	\$1,616,499	\$8,929,184

The impact is amplified when considered on the state level, below:

	Economic Impact of Budgetary Expenditures in the State of California					
	Direct	Indirect	Induced	TOTAL		
Output Impact	\$48,305,097	\$17,088,491	\$19,106,323	\$84,499,909		
Indirect Business Tax Impact	\$401,889	\$672,888	\$1,145,338	\$2,220,115		
Employment Impact	985	100	128	1213		
Tax Impact	Employee Compensation	Proprietary Income	Household Expenses	Enterprises	Indirect Business Tax	TOTAL
	\$3,450,413	\$147,235	\$3,770,197	\$2,039,278	\$2,118,930	\$11,526,053

### Value of Volunteer Labor

Volunteers make an important contribution in every economy. The economic value that they generate is comparable to the monetary contribution of other philanthropic giving.

The easiest way to see the productive potential of such contributions is to assume that the value added of their work is a direct contribution to the organization for which they volunteer to work. Their work enables an economic activity to move forward when an organization faces budgetary problems. Although they do not receive any monetary compensation for their work, the volunteers allow the institution to retain their paid workers and at times hire additional workers. Often times, the work volunteers do is similar to the work done by paid employees. By donating their labor instead of their money, volunteers simply cut out the medium of exchange; for productive purposes, monetary and labor contributions are similar.

The impact in terms of creation of economic value is just the same as if these jobs were paid. Economists consider their impact as an equivalent to output generation. As for job creation one can assume that the duties of the job are performed with direct financing of those jobs by the volunteers. This work makes cautionary a note about the separation of direct employment gains in terms of paid or unpaid in where the impacts are reported and discussed; please refer to section two.

The economic impact of volunteer labor in Los Angeles County is as follows:

	Economic Impact of Volunteer Labor in Los Angeles County					
	Direct	Indirect	Induced	TOTAL		
Output Impact	\$5,989,346	\$2,021,560	\$2,078,997	\$10,089,904		
Indirect Business						
Tax Impact	\$48,882	\$80,422	\$124,438	\$253,742		
Employment Impact	128	12	14	154		
Tax Impact	Employee Compensation	Proprietary Income	Household Expenses	Enterprises	Indirect Business Tax	TOTAL
	\$424,795	\$17,062	\$416,305	\$249,410	\$241,806	\$1,349,378

On the state level, the economic impacts are as follows:



	Economic Impact of Volunteer Labor in the State of California					
	Direct	Indirect	Induced	TOTAL		
Output Impact	\$6,052,092	\$2,139,333	\$2,376,083	\$10,567,508		
Indirect Business Tax Impact	\$49,534	\$84,014	\$142,435	\$275,984		
Employment Impact	128	12	16	156		
Tax Impact	Employee Compensation	Proprietary Income	Household Expenses	Enterprises	Indirect Business Tax	TOTAL
	\$432,702	\$17,078	\$468,860	\$262,534	\$263,333	\$1,444,507

### Important but Unquantifiable Impacts of the Boys & Girls Clubs within Los Angeles County

In addition to the variables for which we were able to calculate specific monetary values, there are several areas where dollar estimates of the impacts were not calculated, but for which there are significant economic implications.

Nutrition and physical exercise can help youth remain healthy. Many youth across the country who have poor nutrition and lack sufficient physical activity are overweight and obese. As a result of this they face serious medical concerns that can be extremely costly. The Boys & Girls Clubs within Los Angeles County encourage physical exercise and good nutrition through their routine programs. The student survey found that a significant proportion of students report that they are losing weight as a result of participation in the Clubs. This study finds that about 15,740 Club members have experienced a loss of weight through participation in Club activities. The results are as follows:

Total number of Club members <sup>1</sup> in all the Boys and Girls Clubs within Los Angeles County	Percentage of Club members who have experienced some loss of weight through participation in activities at Boys & Girls Clubs within Los Angeles County	Estimated number of Club members who experienced loss of weight
57,028	27.6%	15,740

Another benefit for which a specific monetary value could not be found is the impact of the Club on parents' educational attainment. While some parents work while their children are in the

<sup>1</sup> Based on responses of Club managers to in-house questionnaire.

after-school program, others try to upgrade their skills through formal programs. Such activity can allow the parents to become more productive and eventually earn more in better professional positions. Due to a lack of published data, a specific monetary value could not be placed on this benefit; the below table presents data on the number of parents who are upgrading their skills as a result of the Boys & Girls Clubs within Los Angeles County:

<b>Total number of families served by Boys &amp; Girls Clubs within Los Angeles County</b>	<b>Proportion of families with at least one parent able to pursue further education or training due to the Boys &amp; Girls Clubs within Los Angeles County</b>	<b>Total number of parents who have upgraded their skills due to the services of the Boys &amp; Girls Clubs within Los Angeles County</b>
35,643	24.5%	8,733

Although an exact monetary figure could not be calculated, intuition leads one to believe that helping 10,396 adults upgrade their skills will result in a long-term increase in earnings across the community. Such increased earnings not only help these families to lead more economically secure lives but they also improve the county's tax base.

### 3.0) Summary of the Findings from Survey of the Members of the Boys and Girls Club of Santa Monica

We can look into and measure the success of the Boys & Girls Club of Santa Monica by providing the club participants with opportunities for emotional growth, self contentment, improved social skills, and academic growth. This study employed some of the most pertinent themes of evaluation based on the existing literature.

Below are some of the pertinent themes for clusters of questions that were developed to measure members' perception and opinions about their experience at the Boys & Girls Club of Santa Monica. The study also tried to determine areas of unmet needs. The themes of the questionnaire include but are not limited to the following:

- **Club's Environmental Assessment:** A measure of the psychological climate relating to emotional support, autonomy/privacy, and peer affiliation.
- **Belonging Scale:** Measures members' sense of belonging to their involvement in various club programs.
- **Education Plans:** A measure of the club program's success in assisting its members with their academic work.
- **Lifestyle Choices:** A measure of actively participating in physical education opportunities within the clubs and making better choice of healthier diet.
- **Neighborhood and Home Safety:** A measure of how safe students feel in the after-school environment.

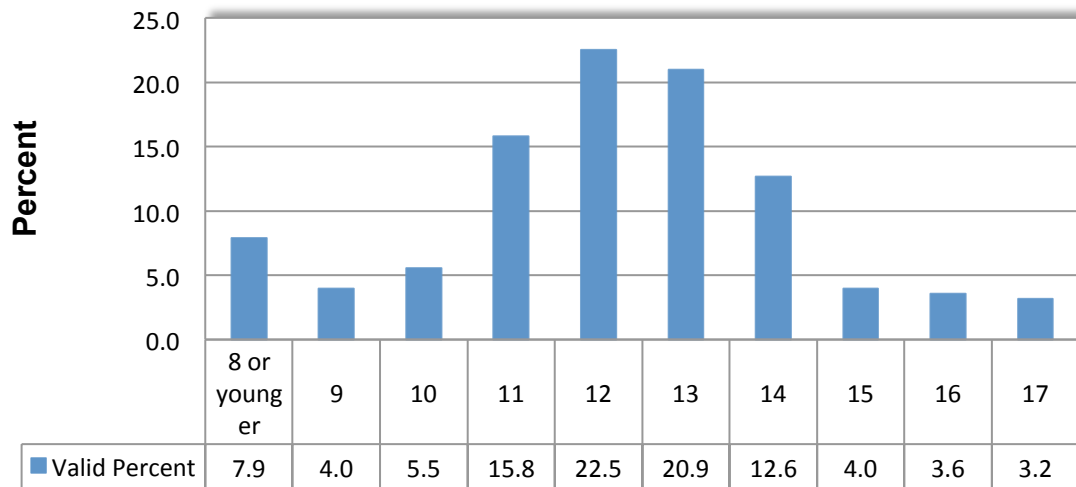
In addition to these inquiries, we asked a number of demographic questions that can be used to cross-tab our findings and learn about how and why respondents may have different perceptions, expectations, or performance levels. This is an area for conduct of greater work with the same data to provide the necessary insights for better future planning of the club.

The questionnaire provided a base-line for yearly comparison, if the club wishes to pursue such studies on a periodic basis in the years to come. Our survey of club members for Boys & Girls Clubs of Santa Monica resulted in 258 completed club member surveys.

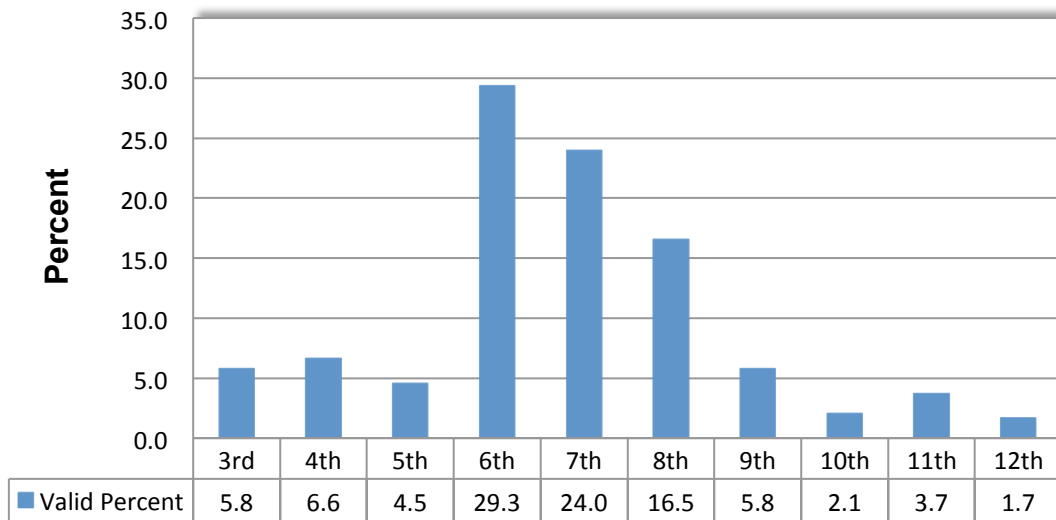
### 3.1) Demographic Characteristics of Members of the Boys and Girls Club of Santa Monica

The following charts provide a clear presentation of the demographic particulars of the club members. Demographic characteristics put a human face on the findings and depict clear pictures of who the respondents are. Demographic characteristics can be used to trace the pattern of responses to different questions. This potential if needed can be used to explain some of the differences in various responses and help to explain possible causes of responses.

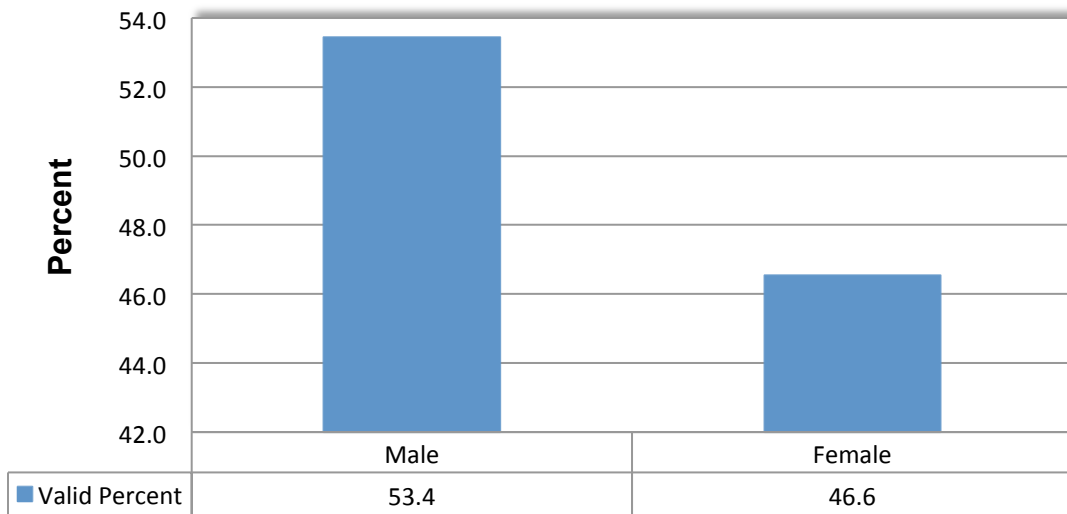
### What is your age?



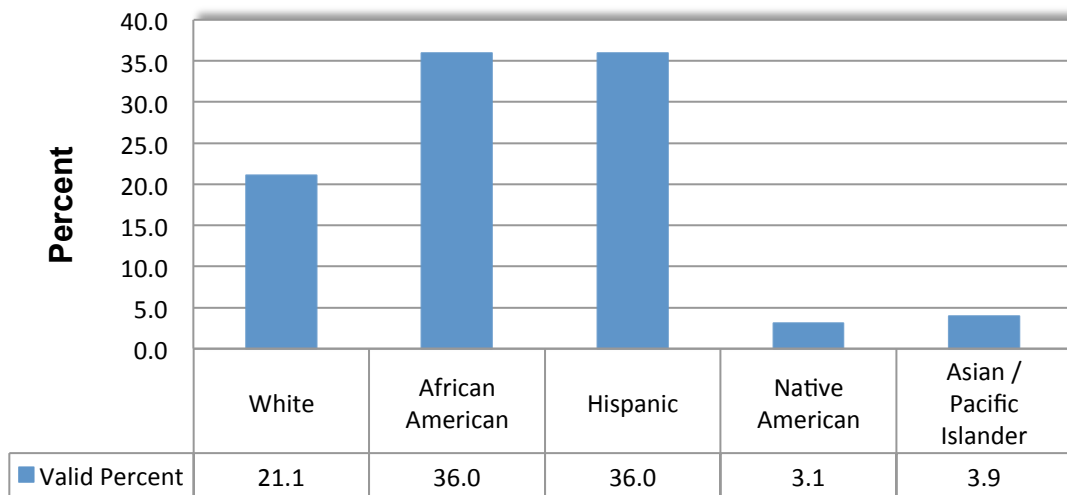
### What is your grade ?



### What is your gender ?



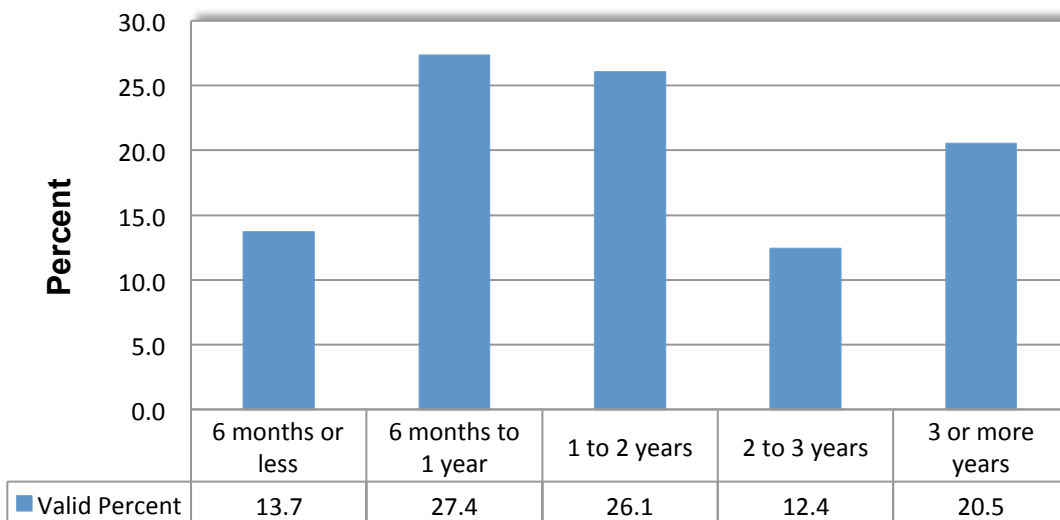
### What is your ethnicity ?



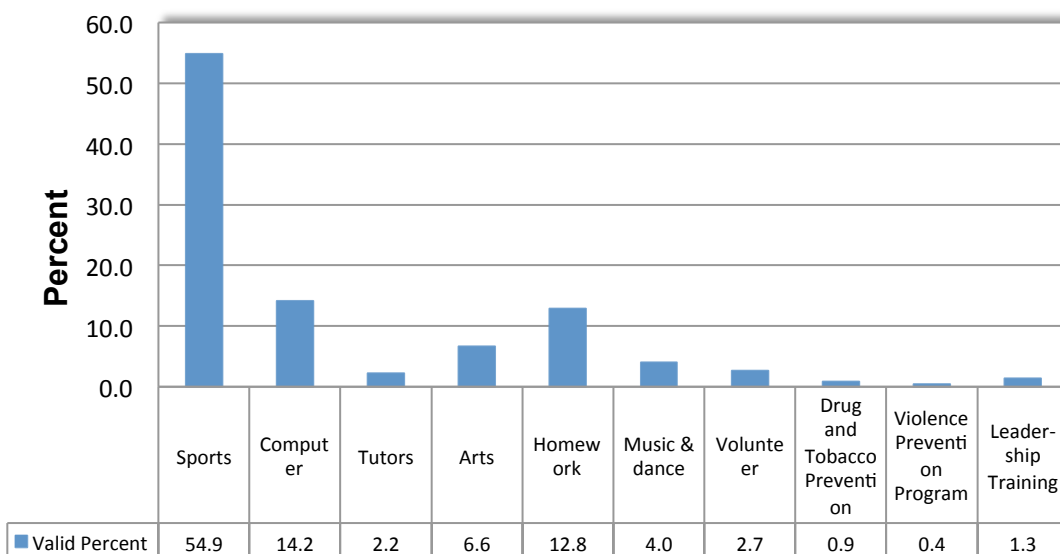
## 3.2) Santa Monica Club Member Opinions regarding Programs and Sense of Belonging

In order for any club to be successful, its programs and staffs must at the very least meet the needs of club members and satisfy their expectations. The club member survey included several questions designed to gauge the satisfaction of club members with the programs and personnel of the clubs.

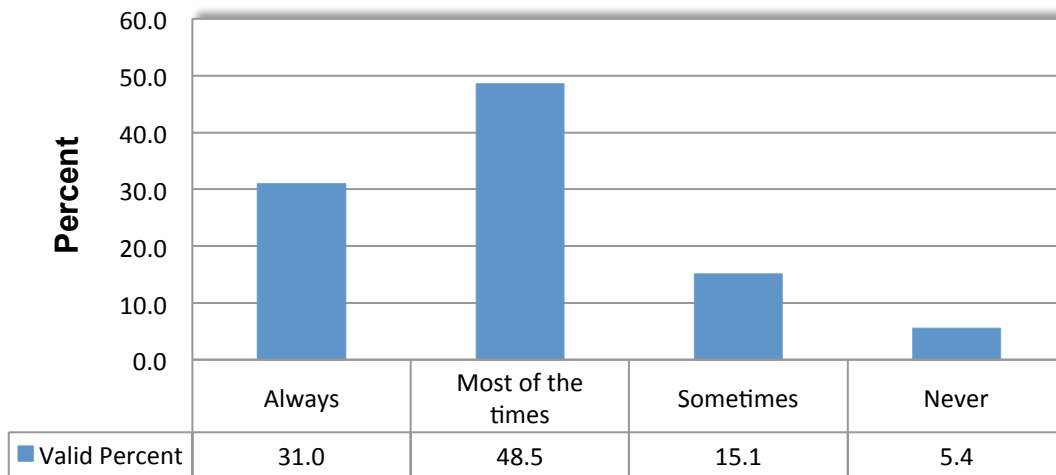
### How long have you been attending the Club?



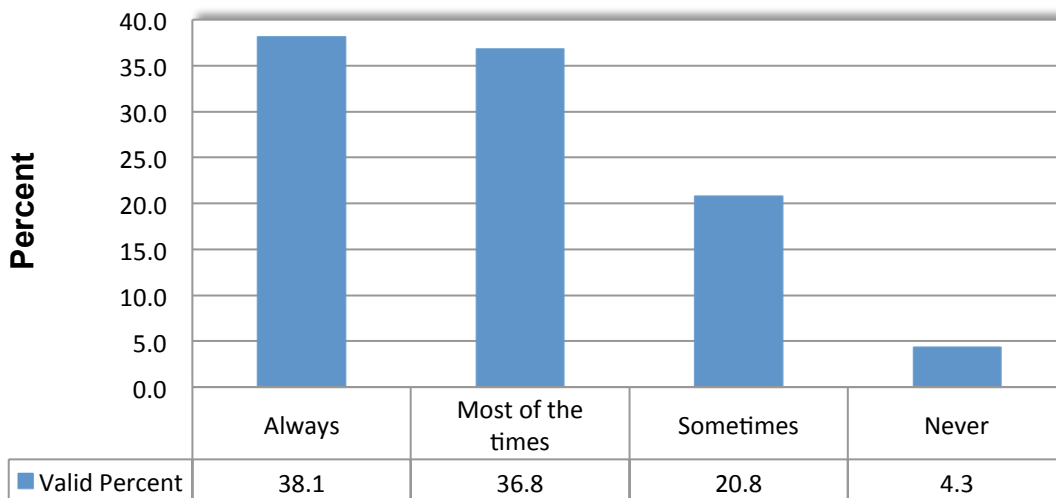
### Which programs do you attend or plan to attend while going to the Clubs (select all that apply)?



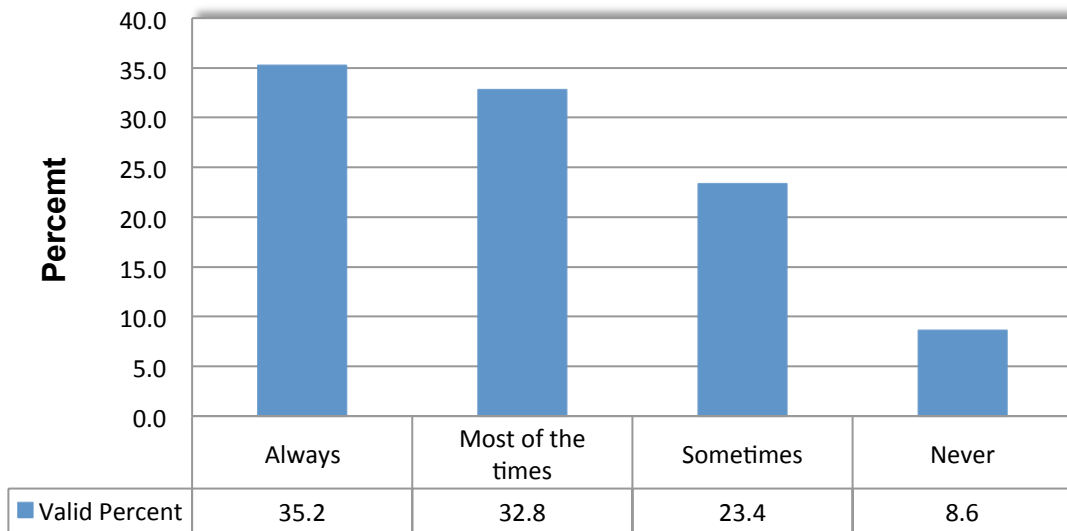
**Do you have enough time to finish what you start to do in activities while at the Club?**



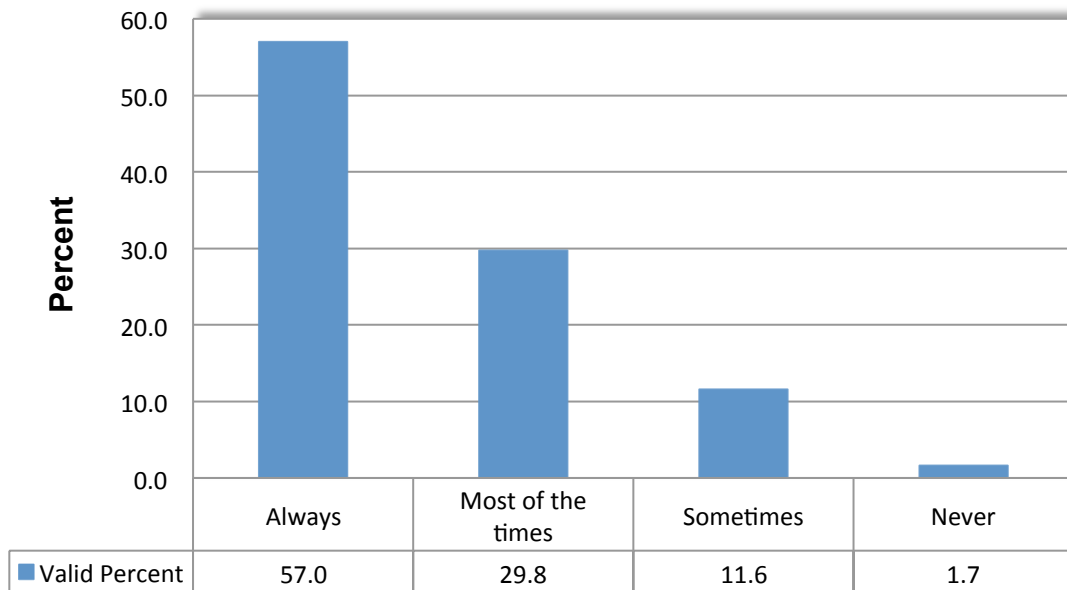
**Do you feel that the programs you participate in at the Club help you with your needs?**



### Do you like participating in the Club's programs?

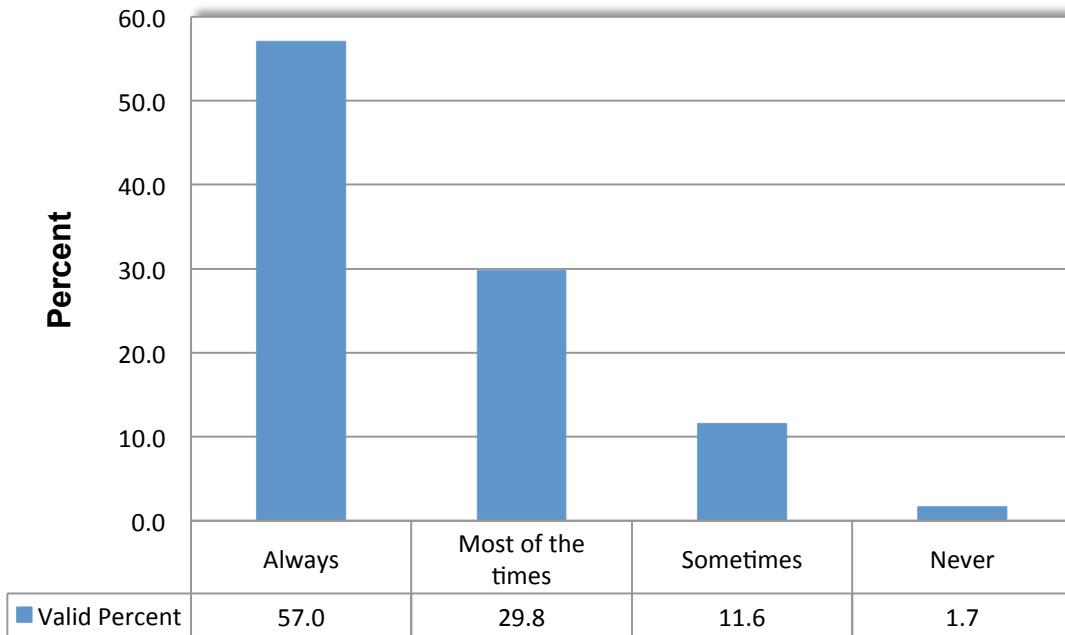


### Do you like the adults who work at the Clubs

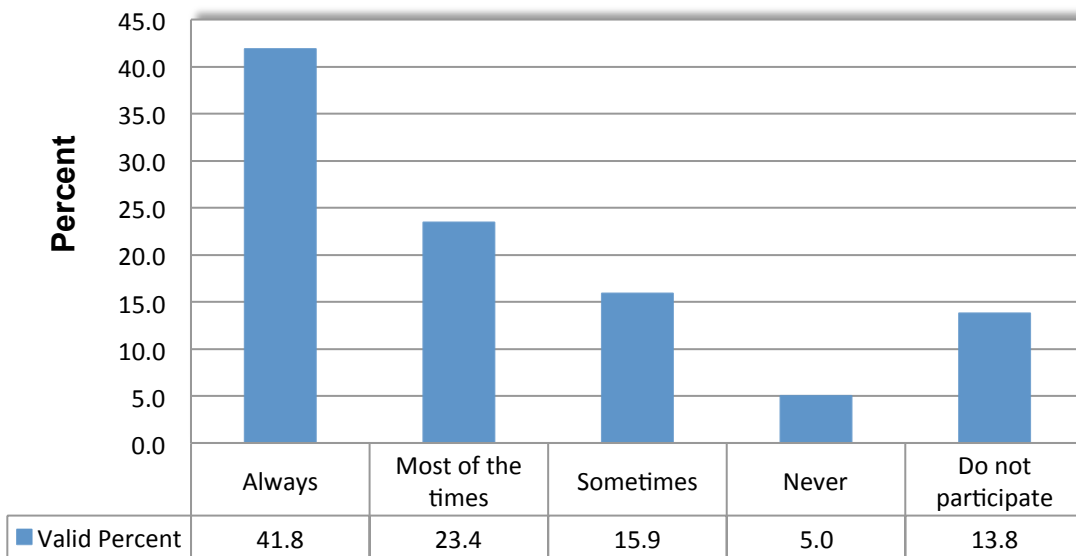




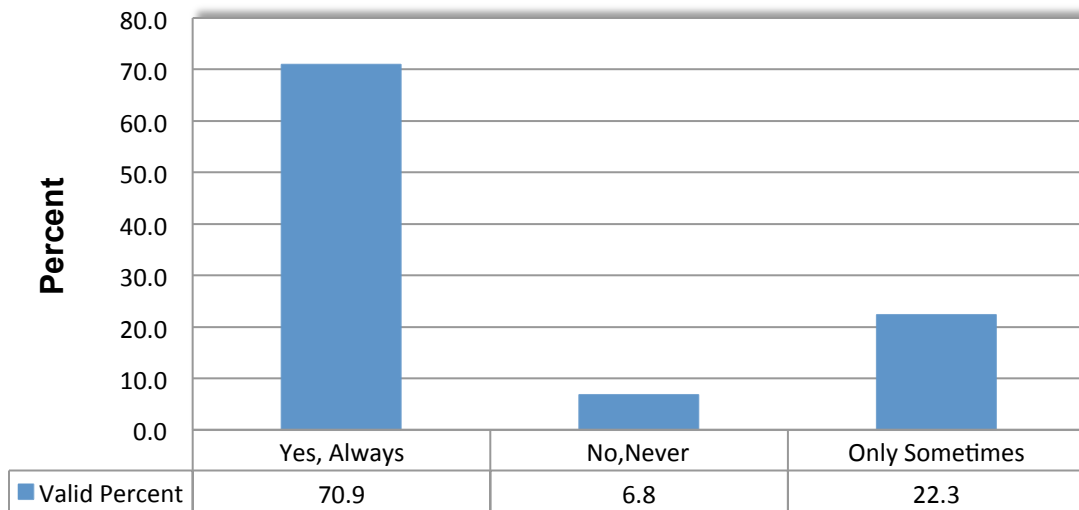
### Do you like the adults who work at the Clubs



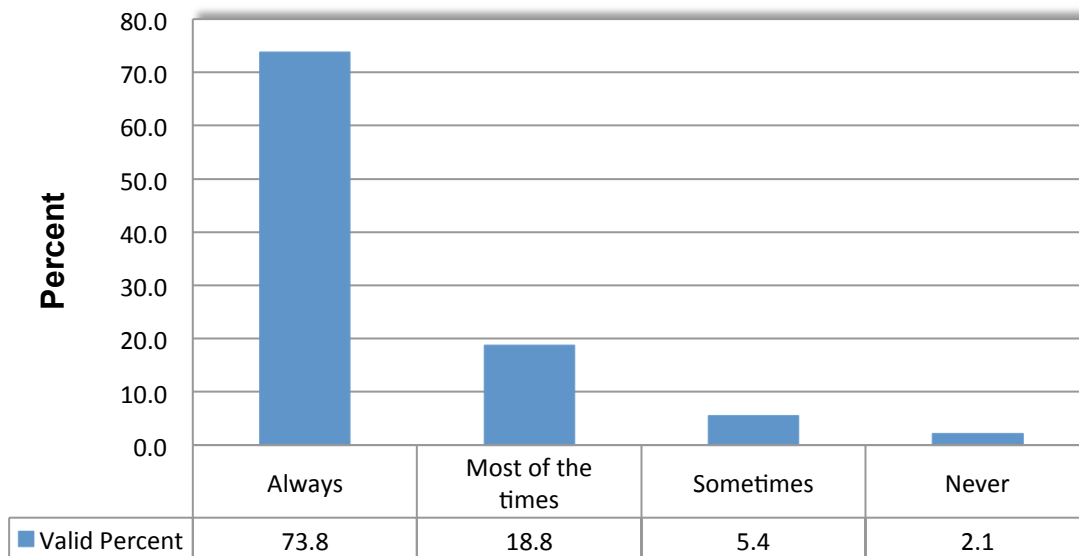
### Is the Club staff able to help you with your homework during and after Power Hour?



### Do you recommend the club to your friends?



### Do you feel safe when you are at the Clubs?

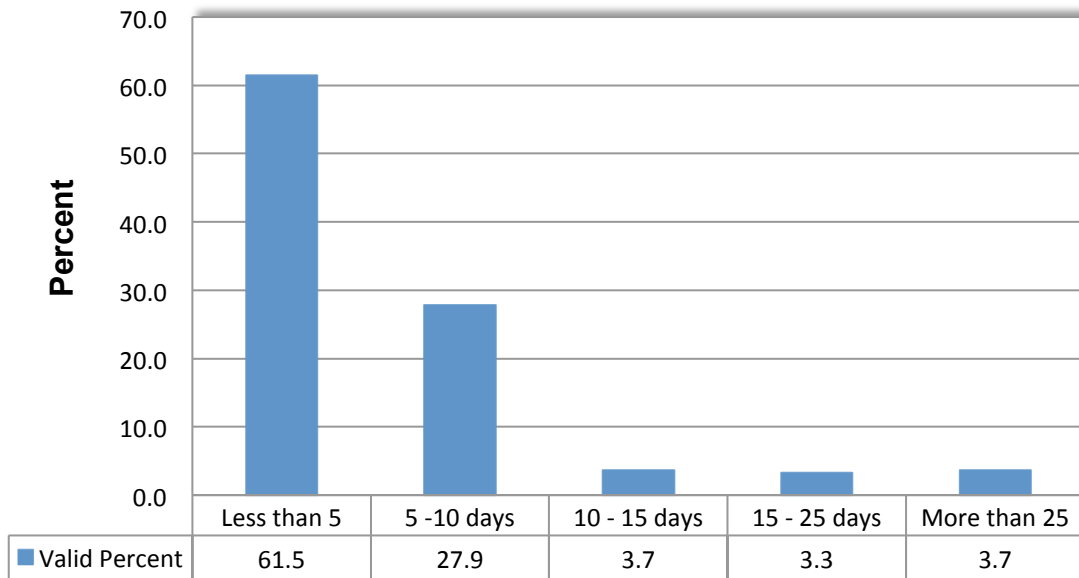


### 3.3) Educational Impact and Club Member Attitudes and Aspirations

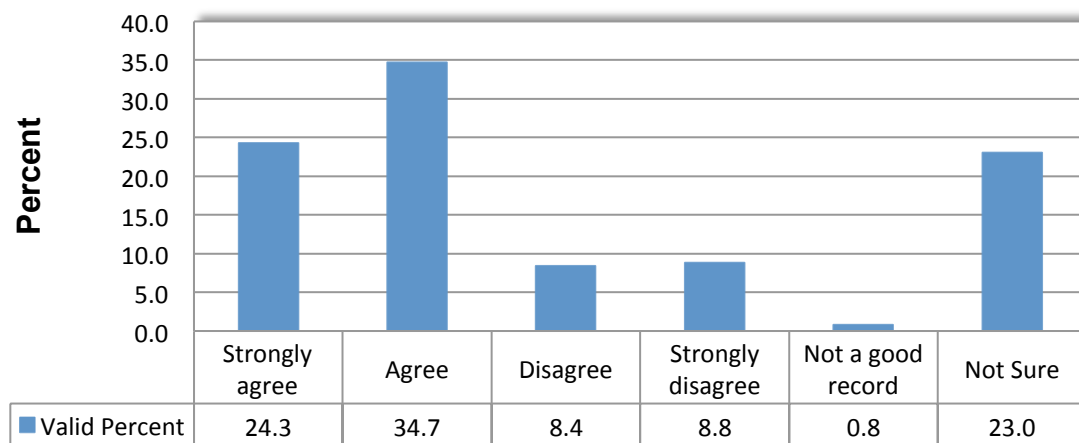
Before they attend the club, members are students. As students there are certain expectations such as homework and academic proficiency. The Boys & Girls Clubs serve as a vital academic resource. First, they offer programs such as Power Hour that feature homework assistance and tutoring; such academic enrichment provides a competitive edge to club members in school. Second, through exposure to a positive environment including adult role models, the clubs can help young people develop better decision-making skills and long-term goals that can focus their

efforts. This section of the report features the response of club members to questions regarding the impact of the clubs on their academics and related attitudes and aspirations.

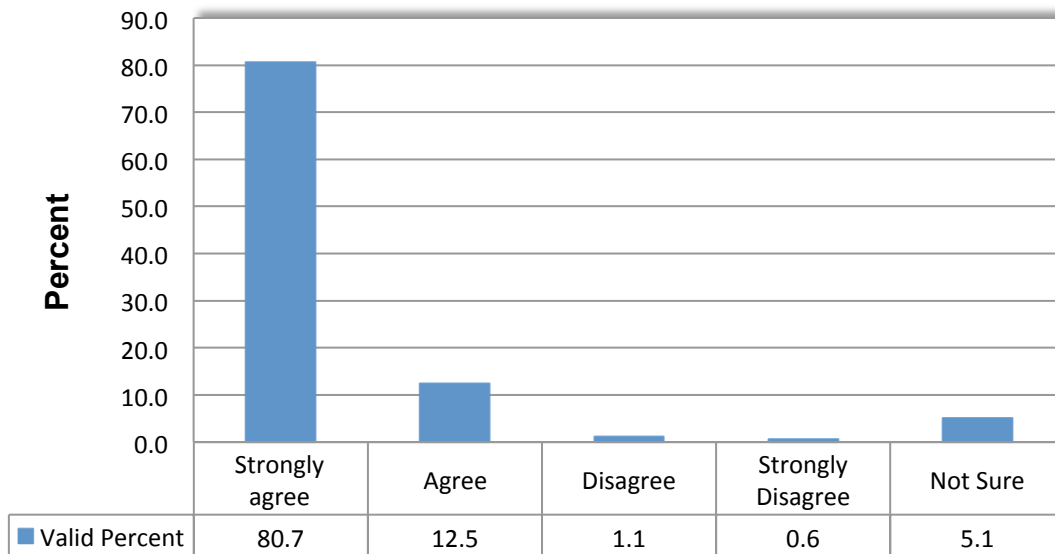
### **I think i might miss\_\_\_\_ school days this year**



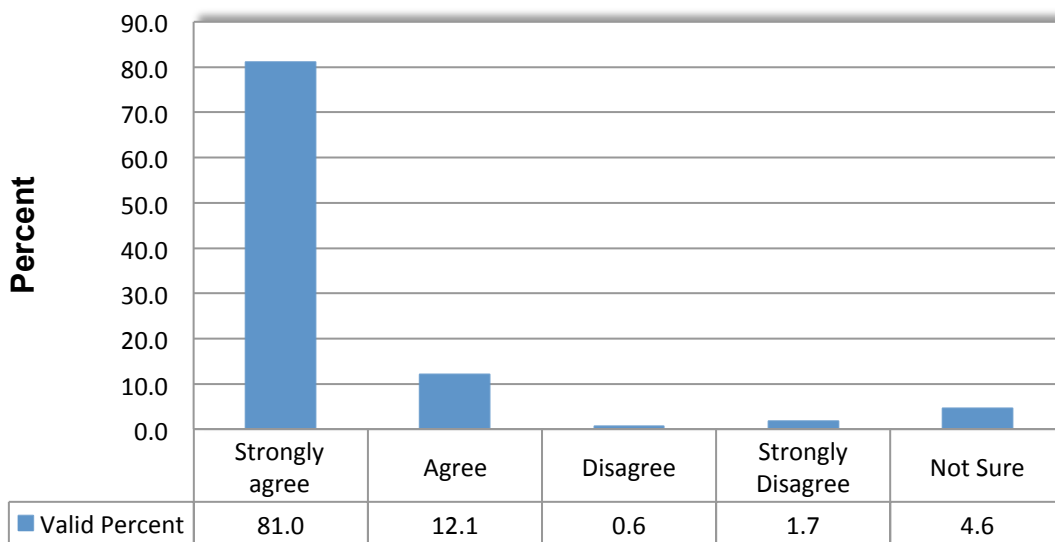
### **I believe one the important reasons for my good record of attending school is my membership and attendance of the Boys & Girls Club.**



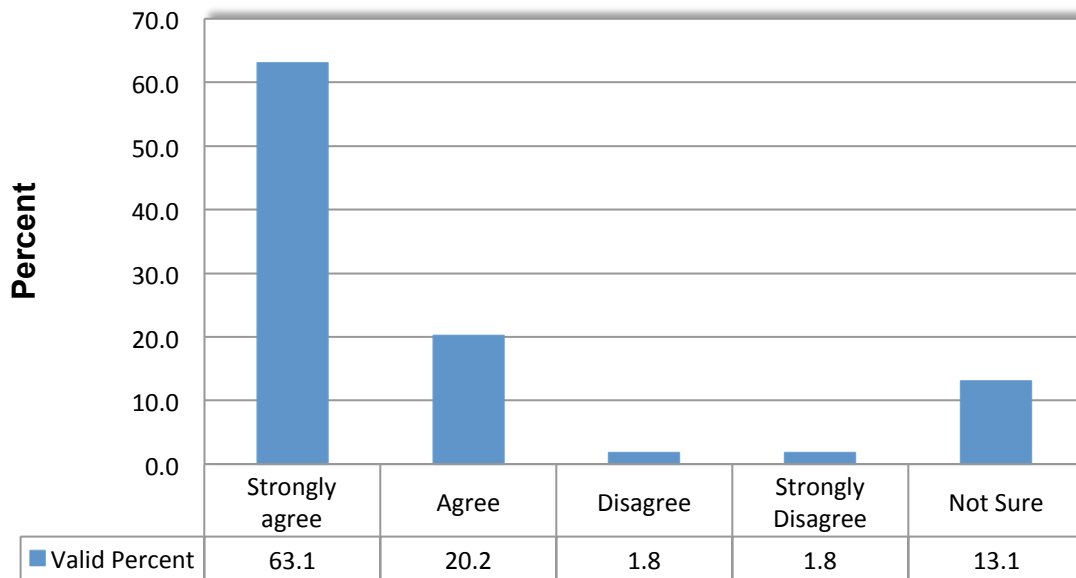
### I am certain I will graduate from high school



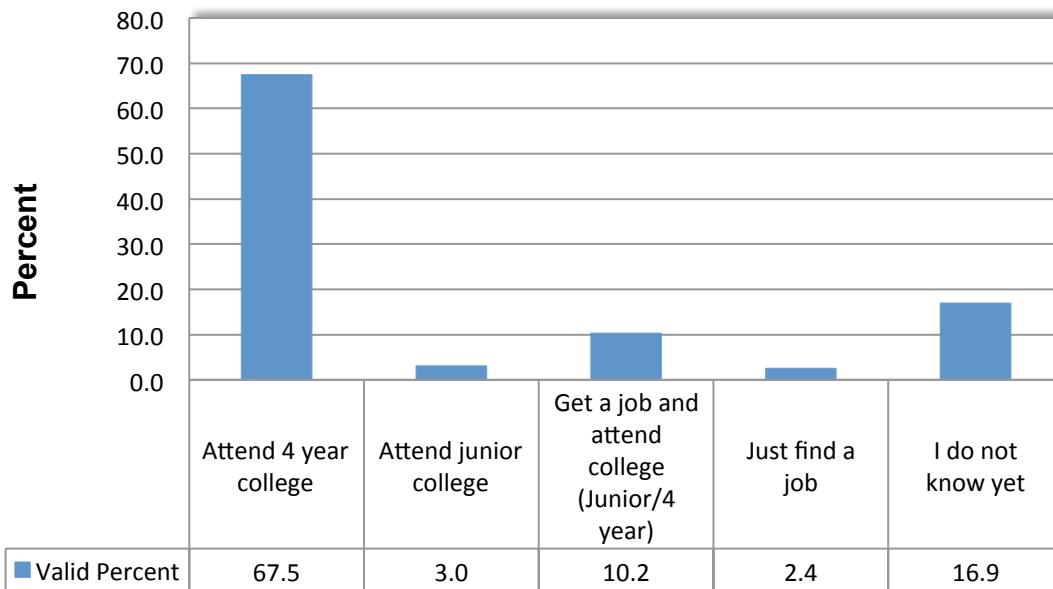
### I think going to college is very important for my future life and success



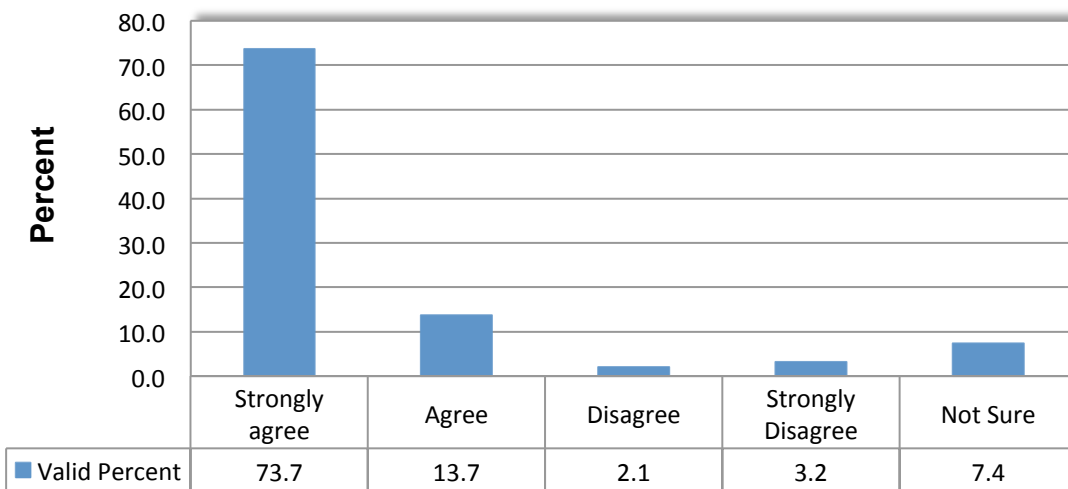
### I am planning to take the SAT or ACT test to attend college when I graduate from high school



### Upon completing my high school I intend to...



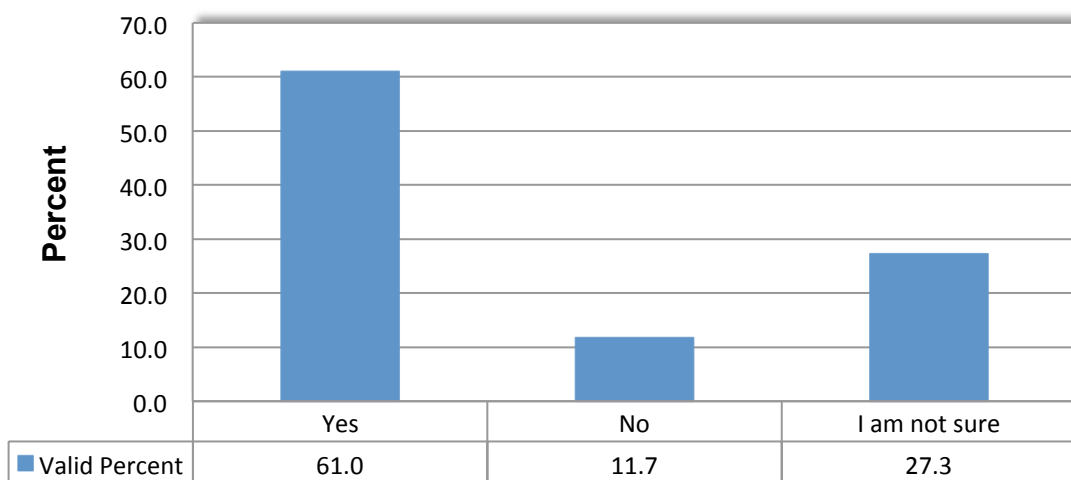
### I am sure that I will attend college after graduating from high school



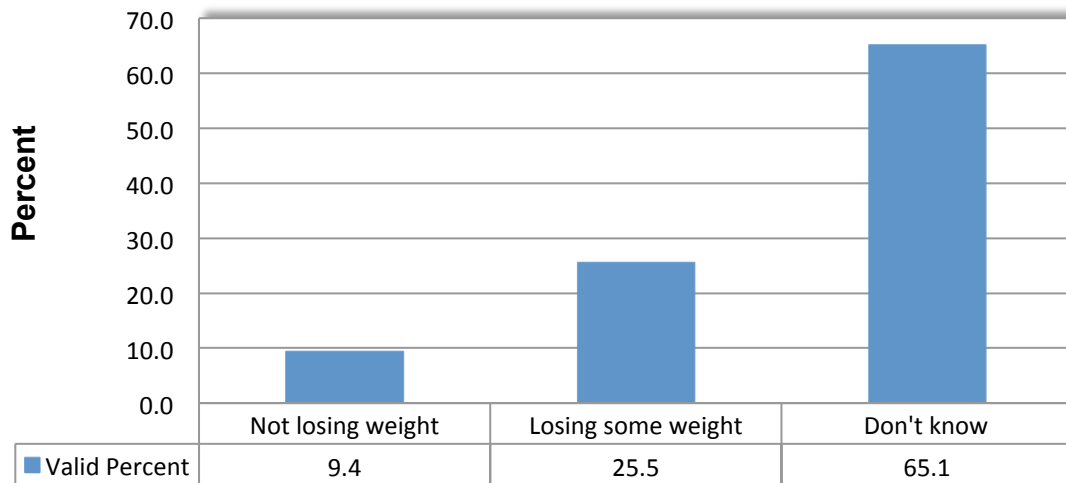
### 3.4) Extent and Impact Physical Education Within the Club

With the growing epidemic of obesity threatening the nation's youth, programs such as the Boys & Girls Clubs that encourage physical activity directly and indirectly through programs are important assets in the community. The club member survey included several questions to understand the extent and impact of physical activity and education in the club.

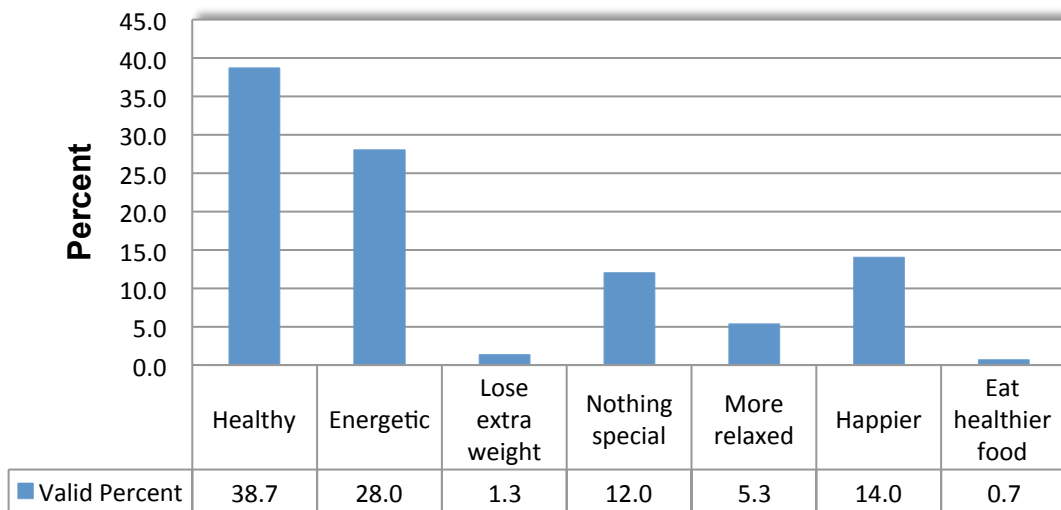
### Do you think that participating in sports and other physical activities in the club helping you become more physically fit?



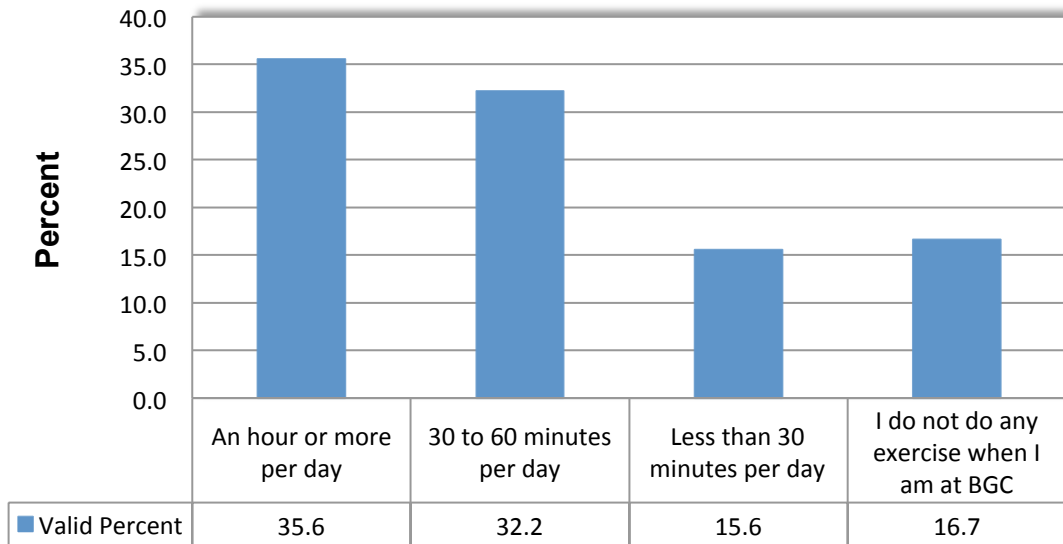
**In the last six months or more that you participated in the club's program, do you feel that physical activities in the Boys & Girls Club resulted in...**



**Participating in physical activities in the Clubs make me feel .....(use all that apply):**



### How long do you spend doing sports or other physical activity each day that you are in the Club





#### 4.0) Summary of the Findings from Survey of Parents of the Club Members of the Boys and Girls Club of Santa Monica

Casual observation and research shows that parents have a significant impact on the long-term educational achievement and success of their children. The lifestyles of many working parents and the inevitable struggle of many to make ends meet makes it hard for them to spend quality time with their children. When parents are increasingly spread too thin, organizations such as the Boys & Girls Clubs play a vital role in providing the supervision and guidance children need. Nevertheless, it can be a challenge for institutions such as the Boys & Girls Clubs to discover the factors and dynamics that support the success of children coming from disadvantaged families. Parents can play an important role in providing necessary feedback and insight that can help the clubs better manage the services that they provide. It is for these reasons that the data generated from the parent survey is particularly important. Parents are in a unique position to make observations regarding the clubs: they have special insight into the lives of their children and they are invested in closely observing the impact of the Boys & Girls Clubs on their children.

In order to gauge parent opinions, a survey was administered to the parents of club members with the following themes of inquiry:

- **Basic Demographic Information:** Important demographic information that allows us to cross-tabulate information and learn more about those served by the alliance.
- **Measuring Positive Change in Children:** Assessment of changes in the behavior of their children as a result of attending the club (assessing the efficacy of the club services).
- **Academic Needs of Children:** Assessment of the success of the club in meeting the academic needs of their children.
- **Health and Healthy Habits of Children:** Inquiry about parent views on the programs ability to help their children to develop healthy habits with regard to eating and exercise.
- **Parents Needs:** An assessment of how the club services satisfy the needs and demands of parents including the ability of parents to work and pursue further education due to club services.

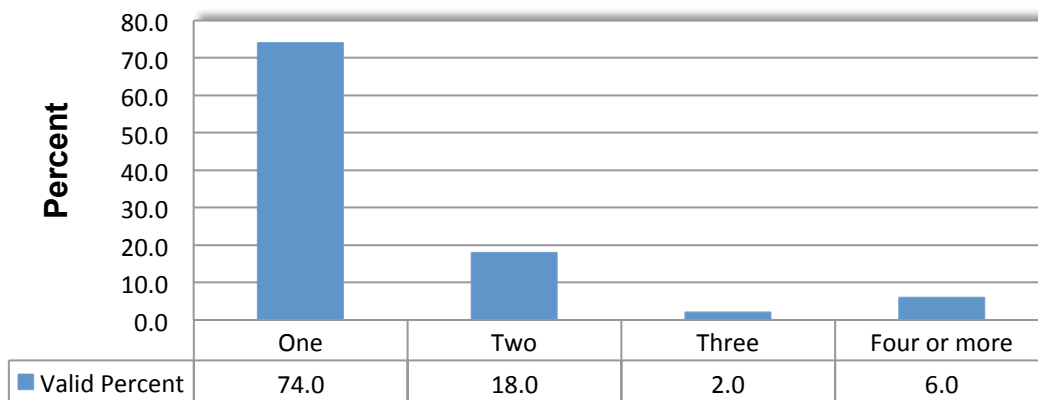
Through this survey we manage to complete 51 surveys for the parents. This was less than the desired level but the results nonetheless provide an excellent insight into the mindset of parents about the impact of the club on their lives and life of their children. The findings can be used to

recognize the importance of the club on the lives of the families that use its services and ideas about what can be done to further improve them.

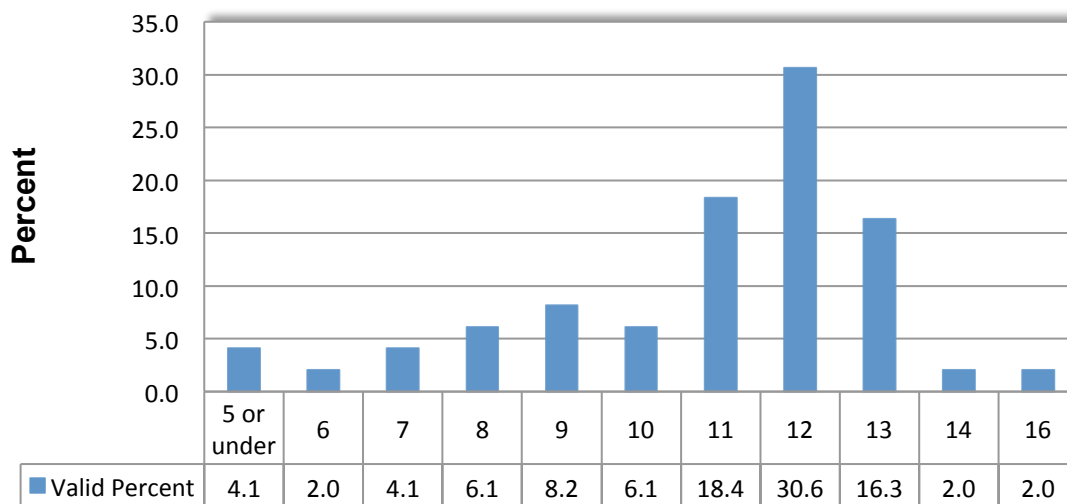
#### 4.1) Demographic and Socio-Economic Characteristics of Parents of Members of the Boys and Girls Club of Santa Monica

Information regarding the demographics of parents can help club management learn about the background of the families that they serve. As such, several questions concerning socio-economic indicators were included in the parent survey. Such questions and data can also be utilized to cross-tab findings from other questions in the survey.

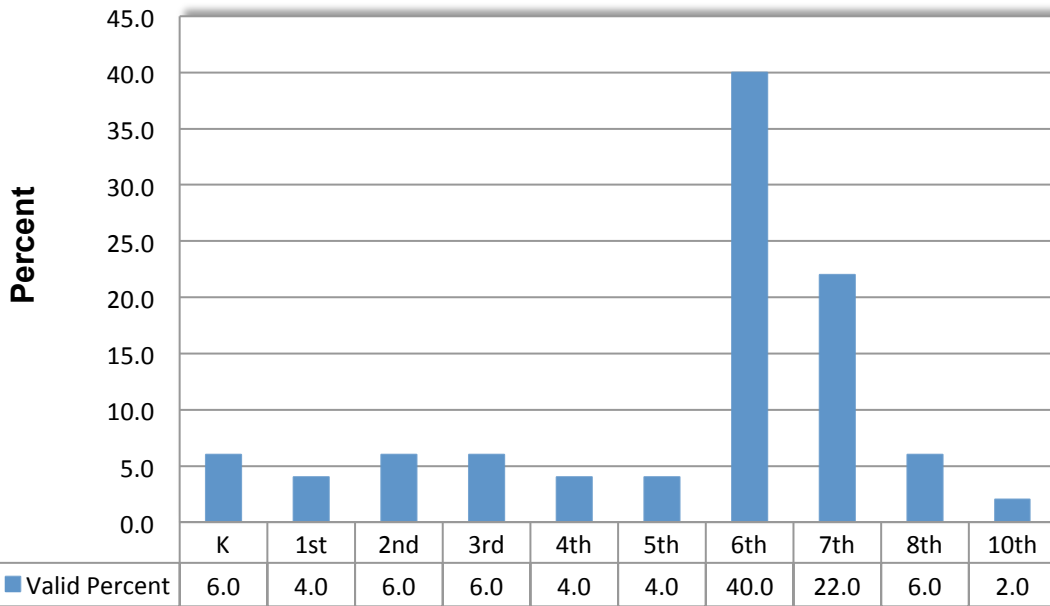
**How many children in your home go to this particular Boys and Girls Club?**



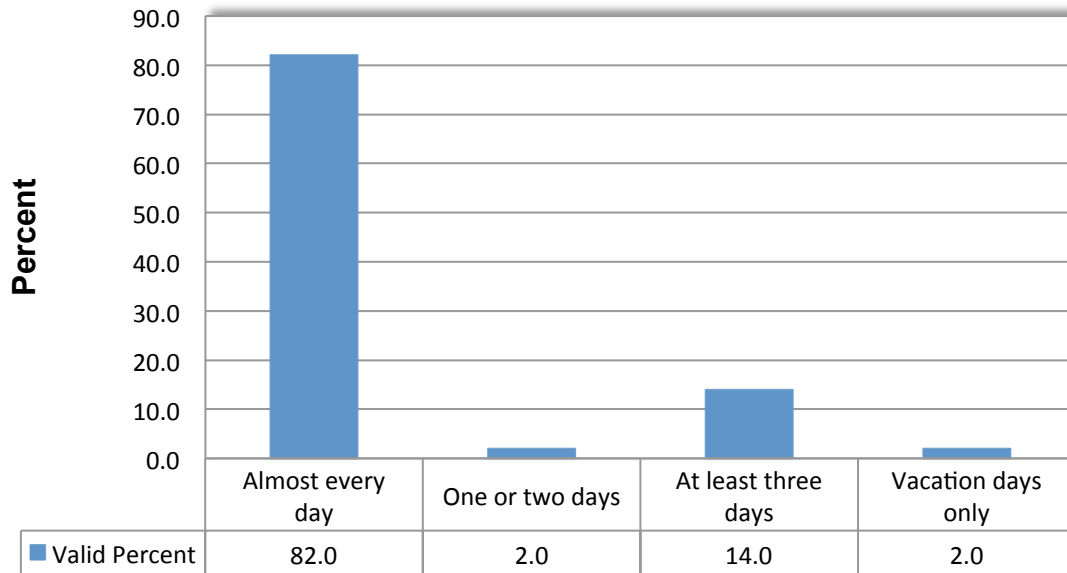
**What is the age of your child (years old)?**



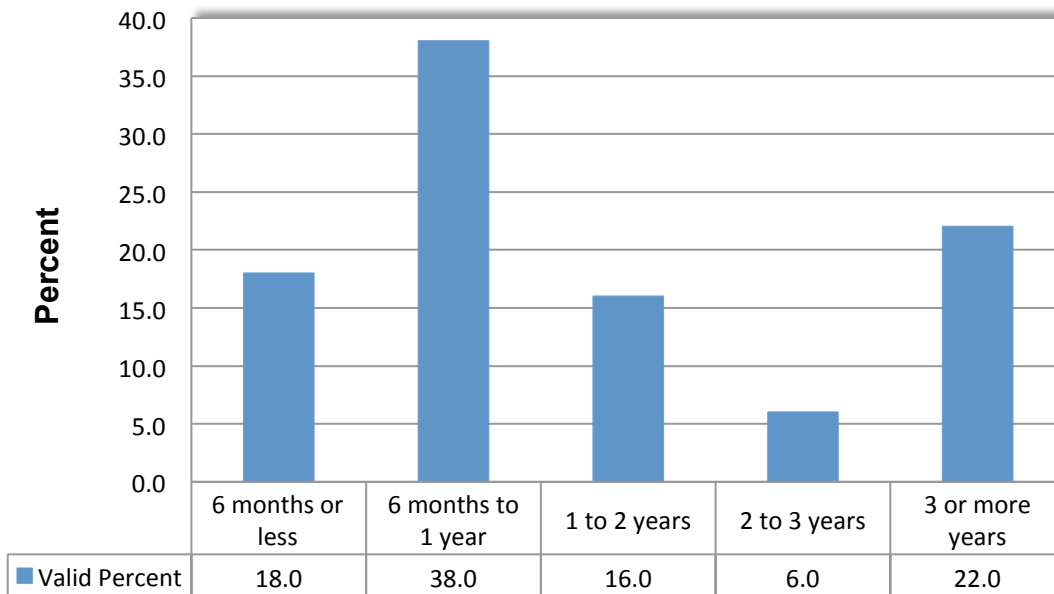
### What is the grade of your child?



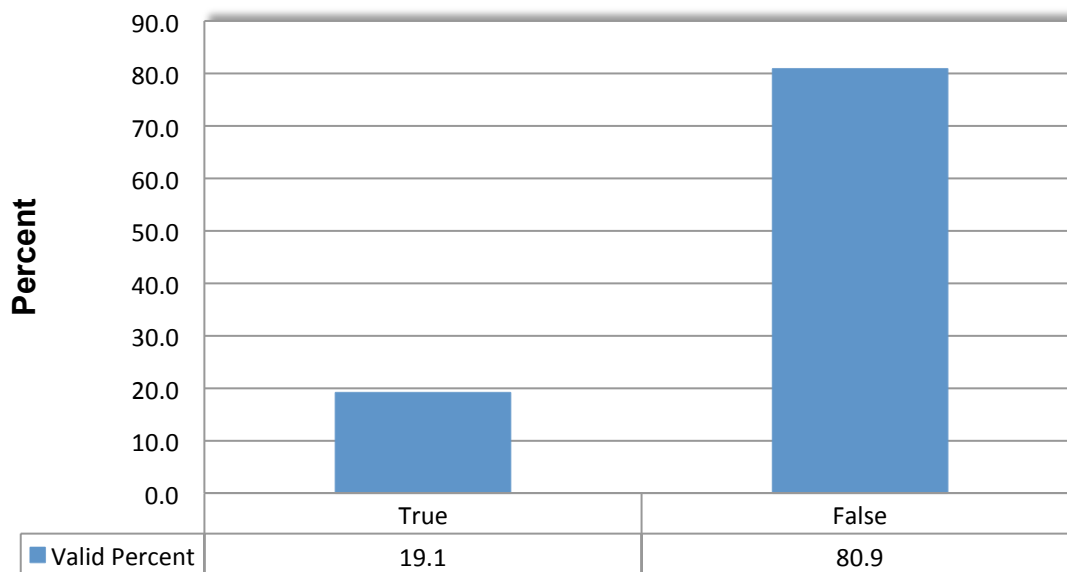
### When the club is open how often does your child attend it during the week?



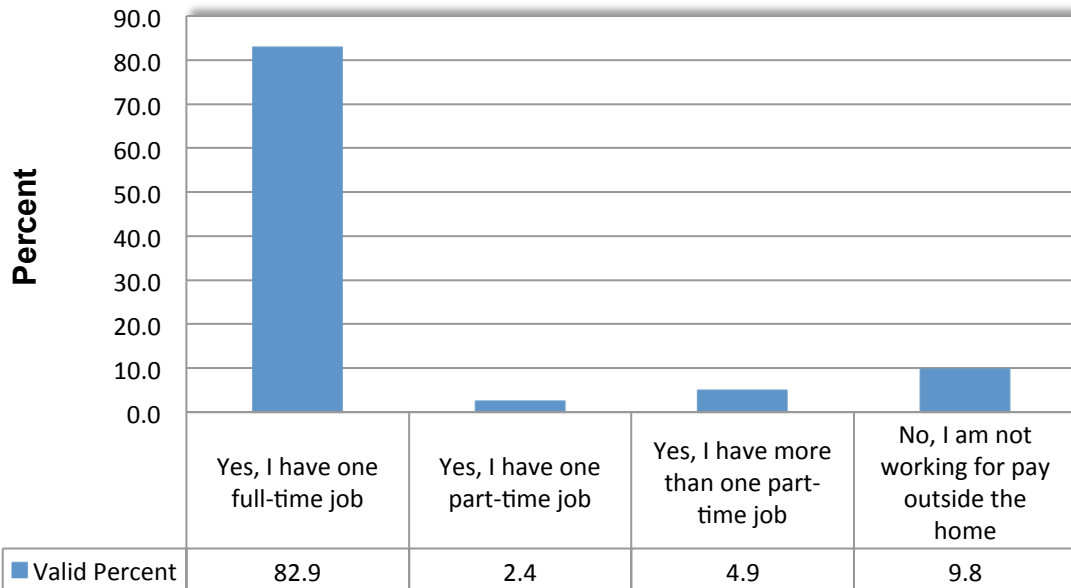
### How long has your child attended BGC?



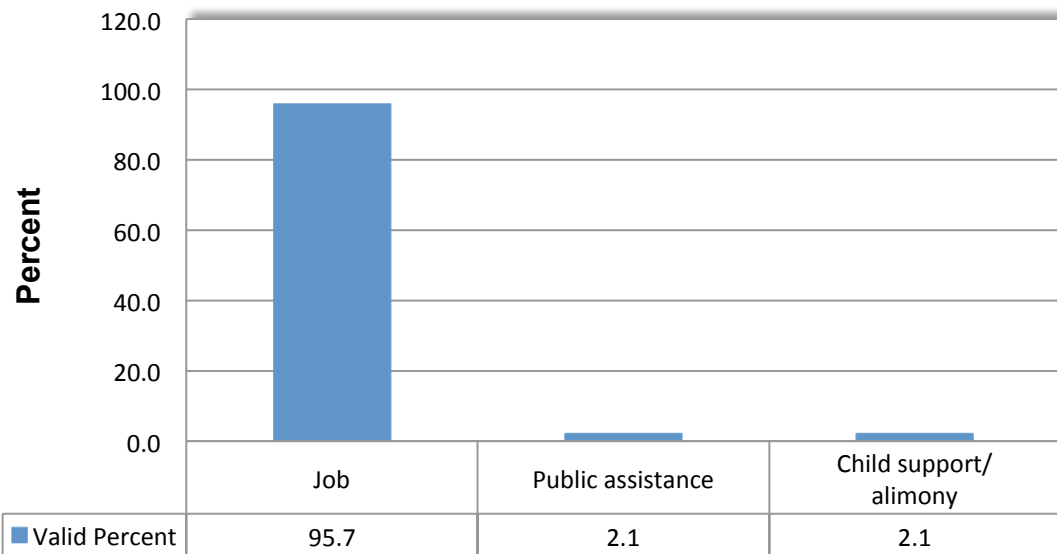
### My child receives free lunch at school



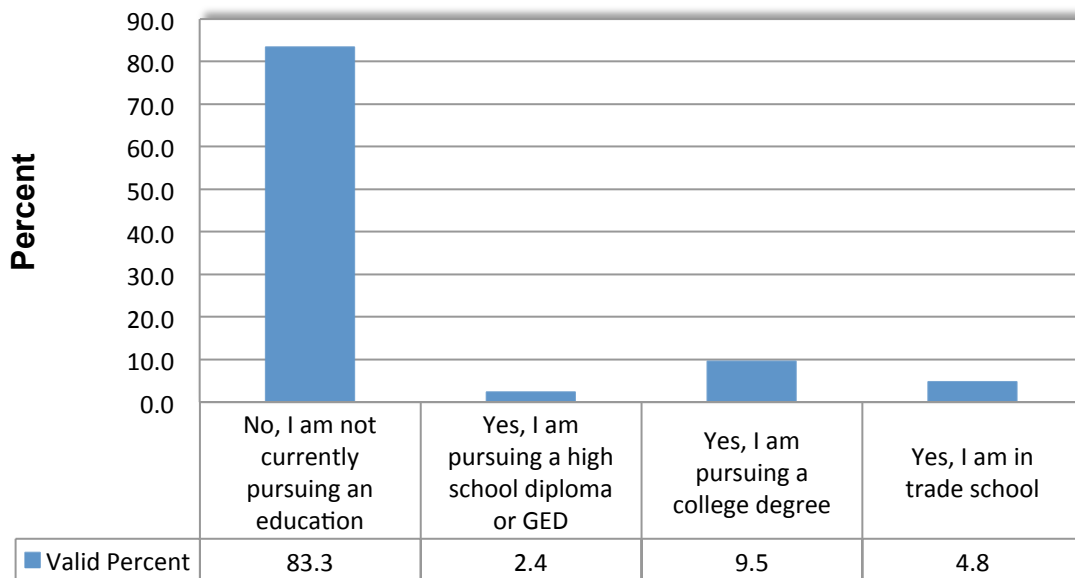
### Are you working for pay outside the home?



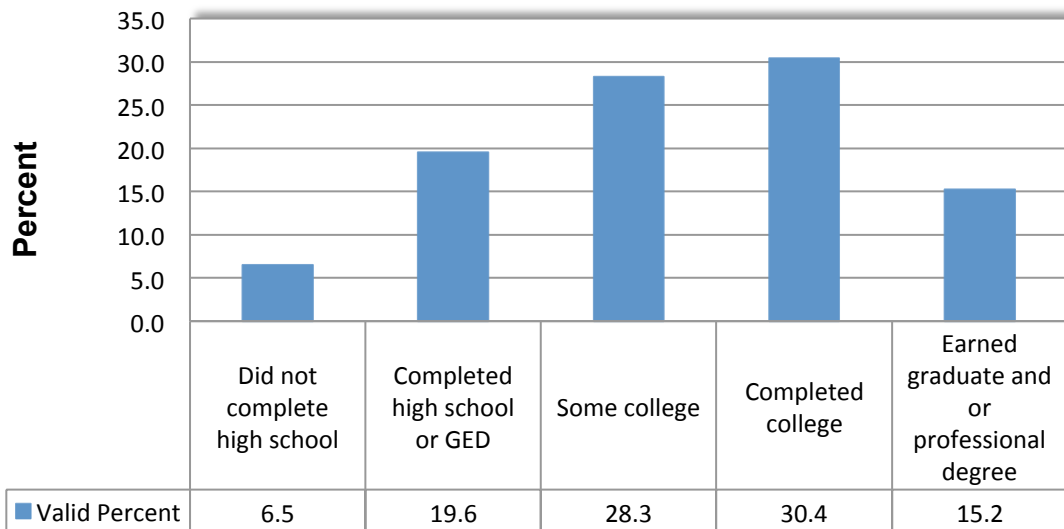
### What is your family's primary source of income?



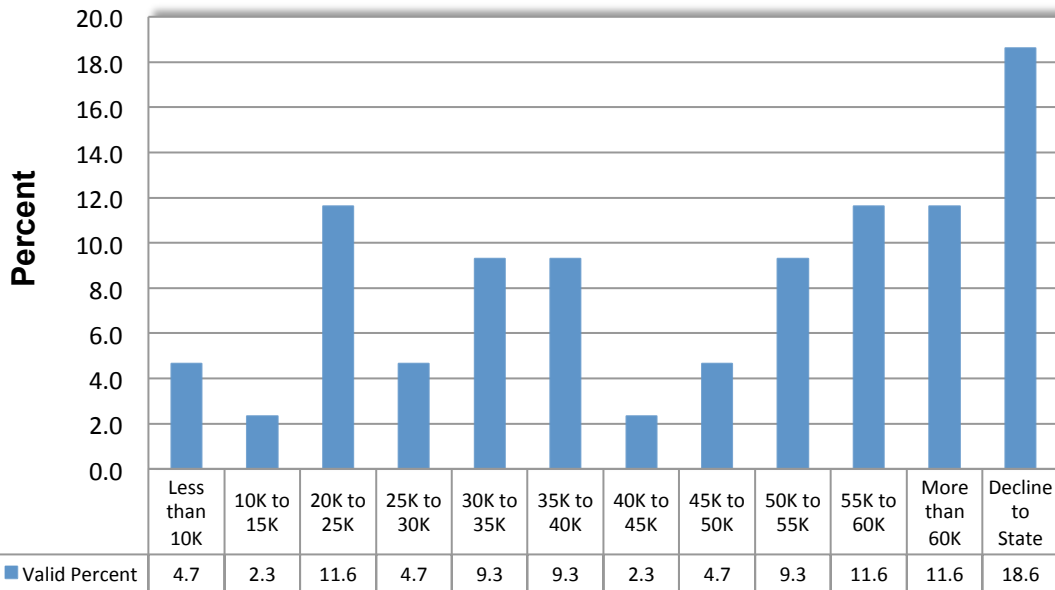
### Are you currently pursuing a higher degree or certificate that will help you with your career?



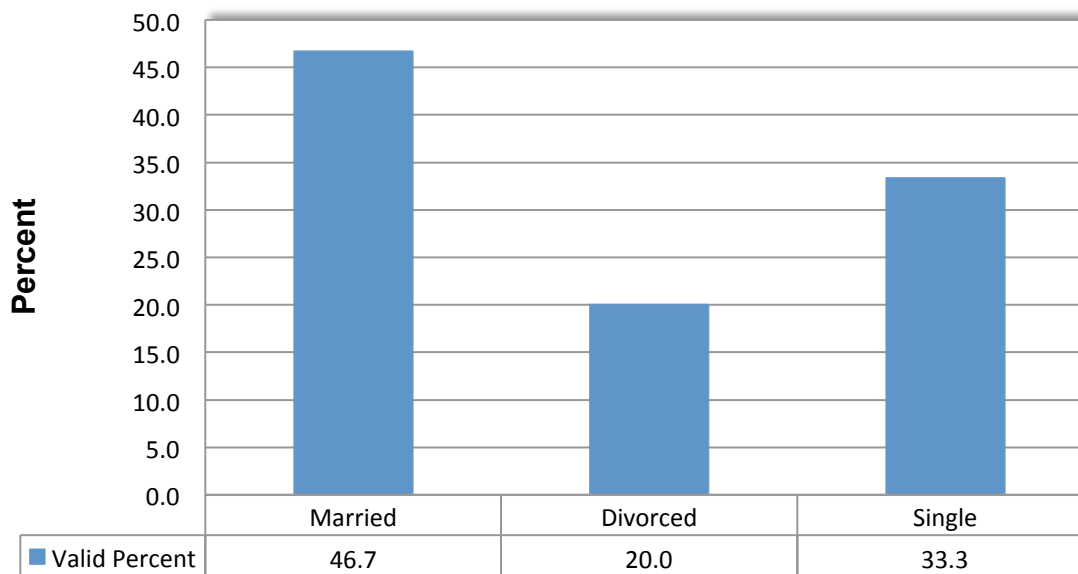
### What is the highest level of education that you have completed?



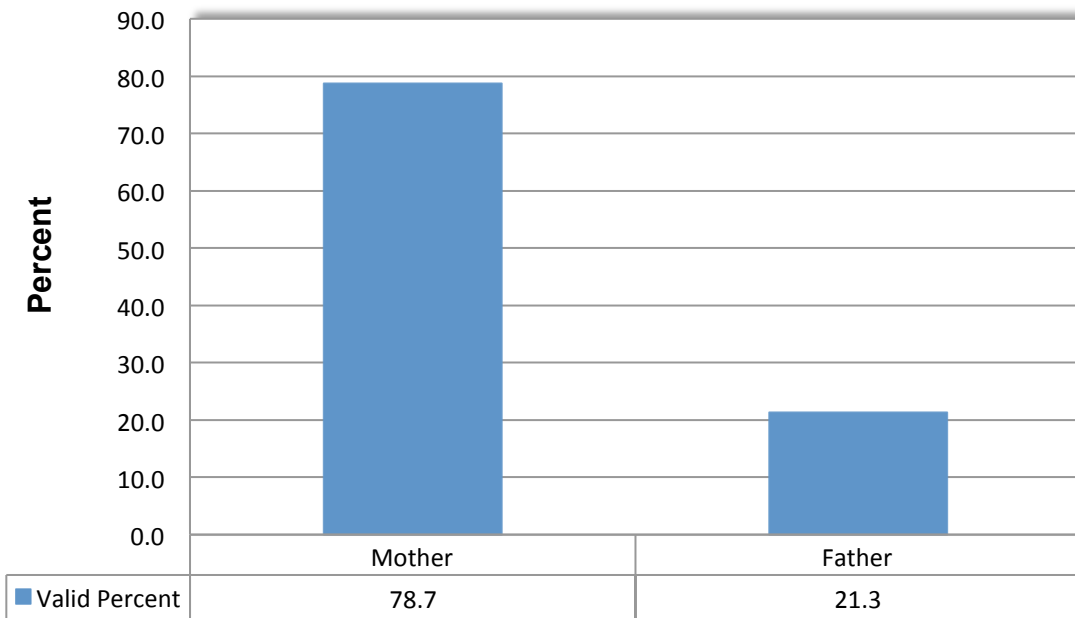
### What is your individual annual income?



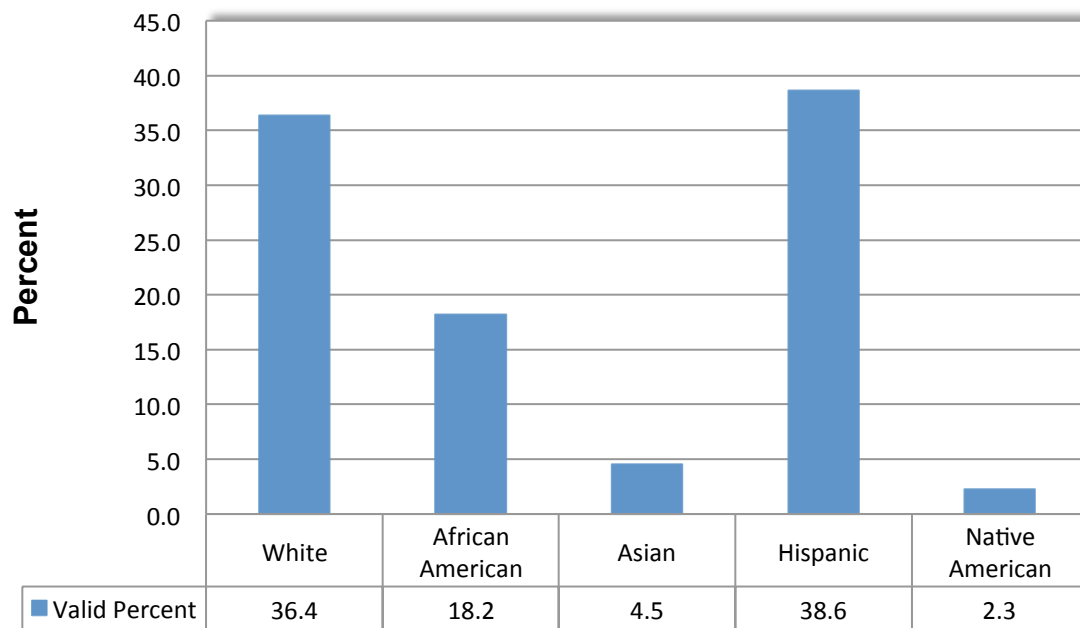
### Marital status



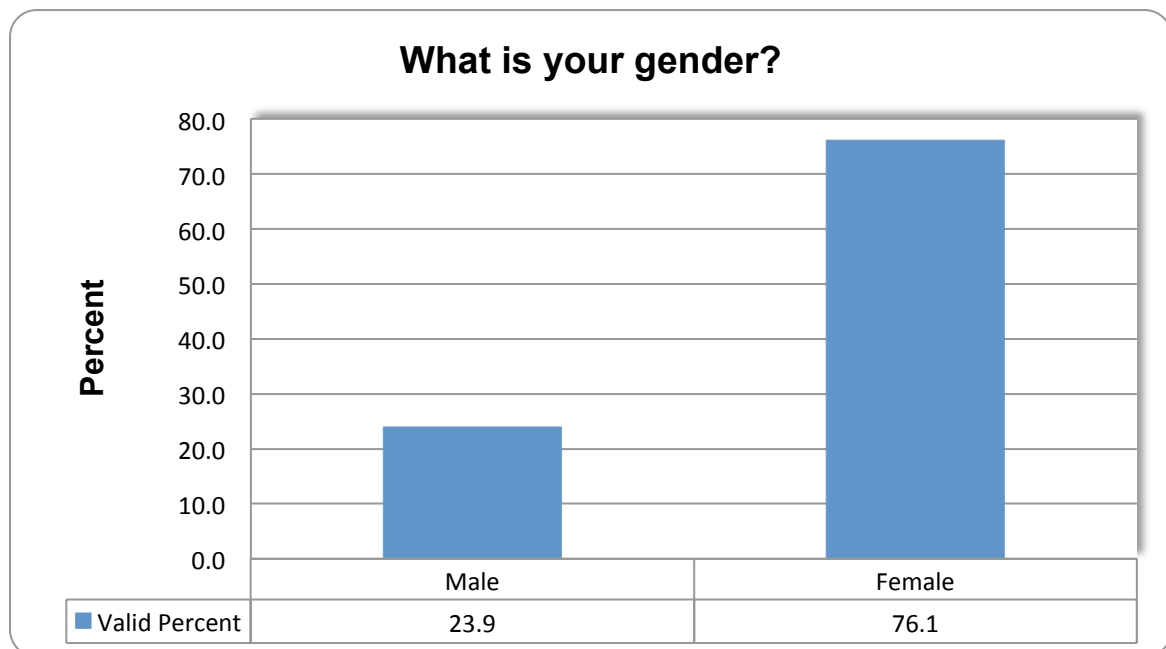
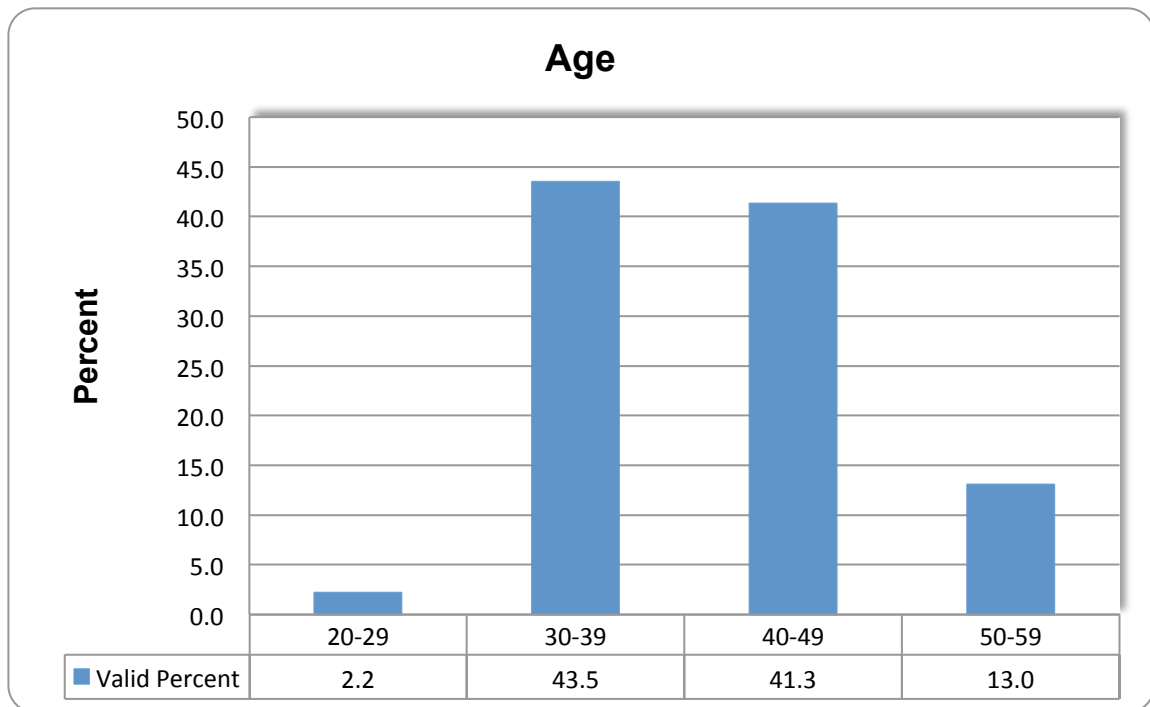
### Relationship to the child



### Ethnicity



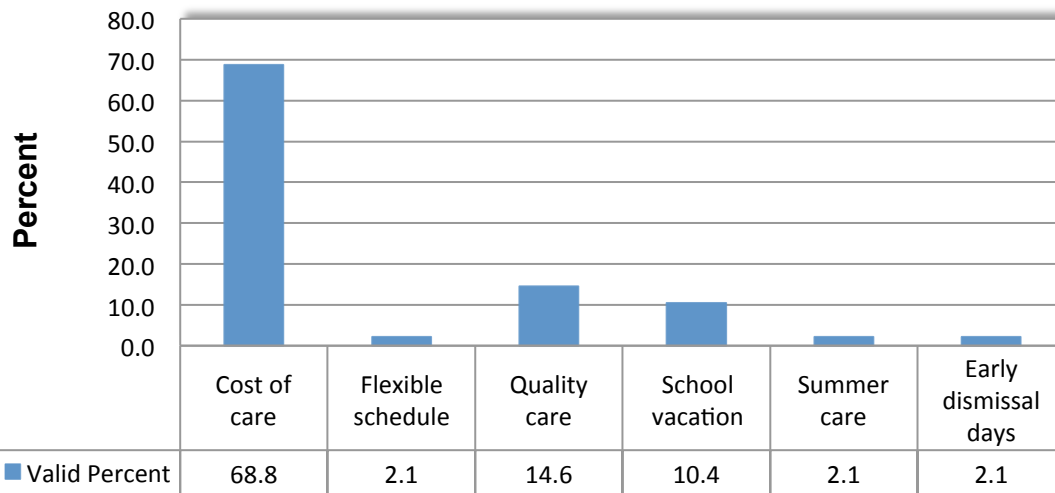




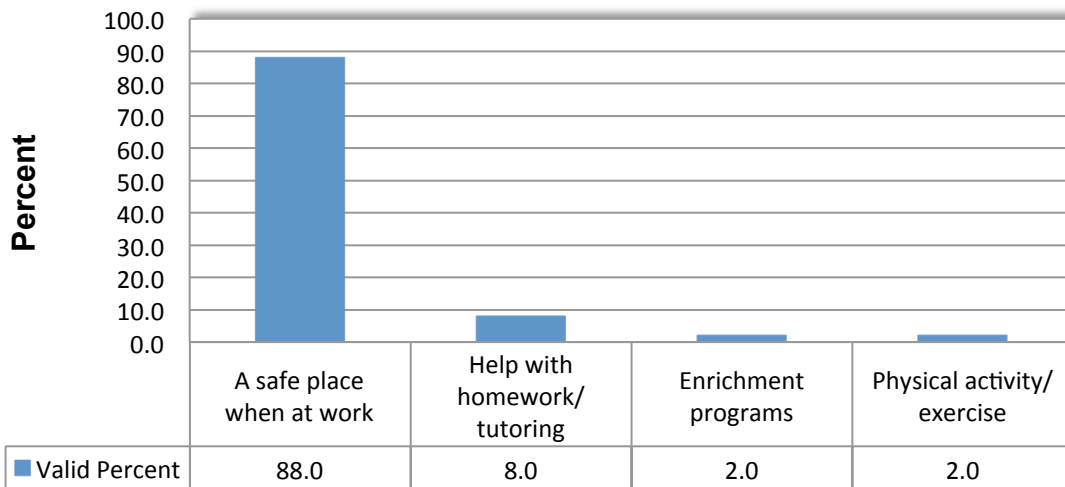
## 4.2) Family Need for Club Services

One way to judge the importance of the Boys & Girls Clubs is to assess the degree to which families need the services of the clubs. Such needs can be shaped by constraints facing the family or the desires of parents. This section presents questions focused on this subject in the parent survey.

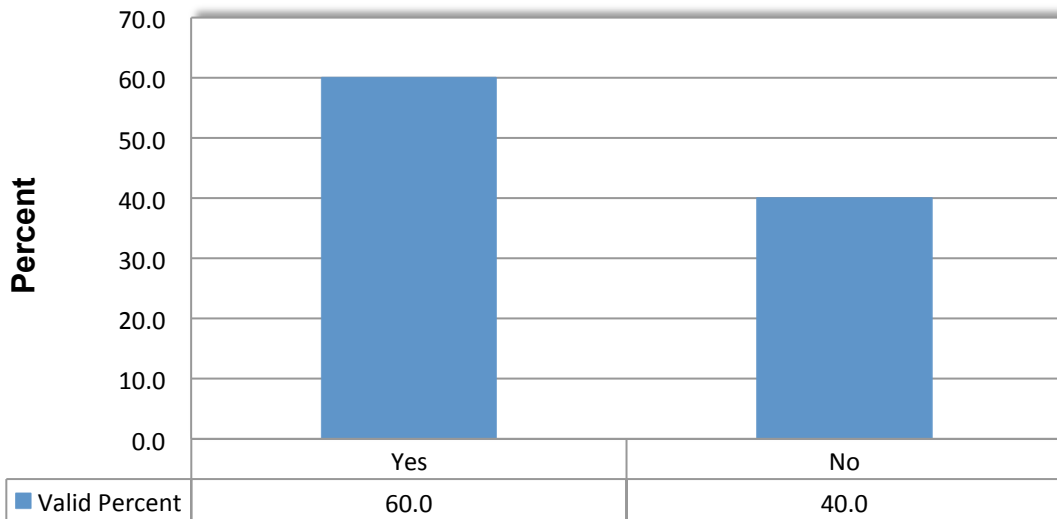
**Check your family's greatest challenges with school age child care (select all that apply)**



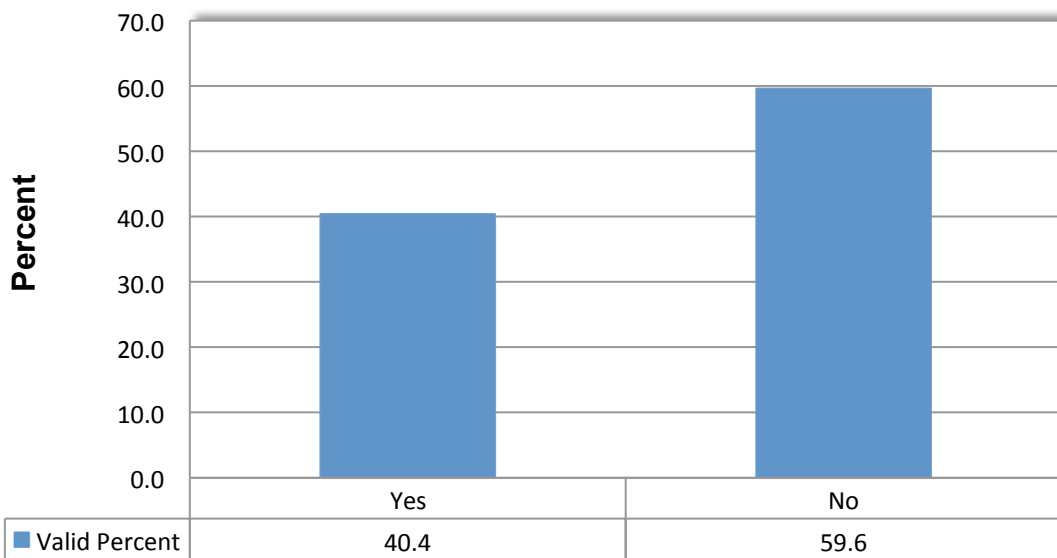
**The reason(s) you need the Boys and Girls Club(select all that apply):**



### This program is the only program that I can send my child to



### I cannot afford to send my child to any other program



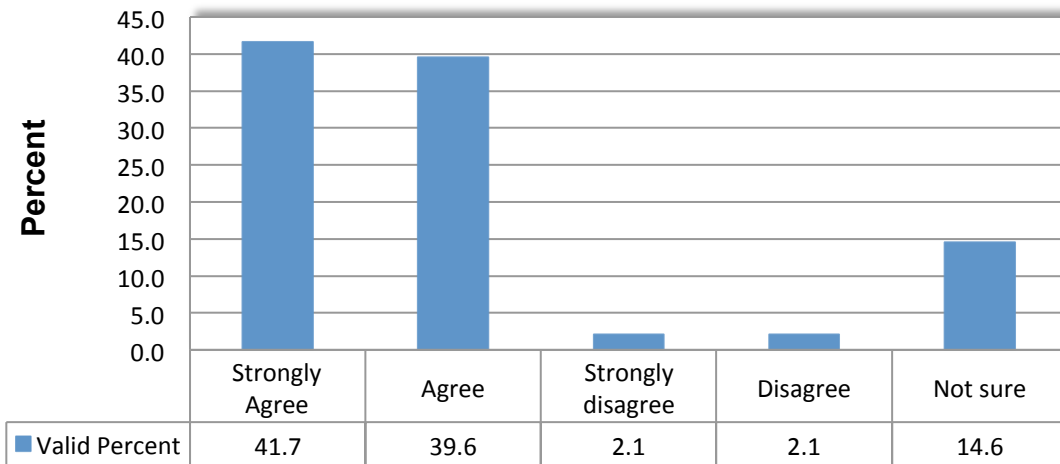
#### 4.3) Impact of Clubs on Child's Self Confidence and Social Aptitude

Due to the special position of parents to assess changes in their children, the parent survey sought to determine the areas in which parents observed changes in their children.

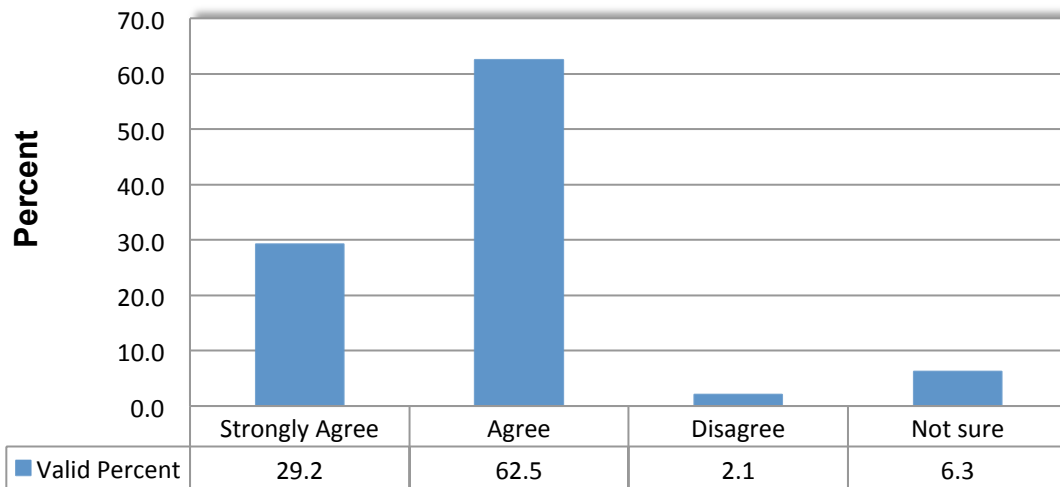
One particular area of importance is the area of self-confidence and social skills. Many youths face pressures as they mature that can adversely impact their confidence and ability to make

friends. As an environment that promotes social interaction, the clubs can play a role in helping young people develop the self-confidence and social skills that they will need their entire lives. As such, this section presents the views of parents regarding whether they have observed such improvements in their children.

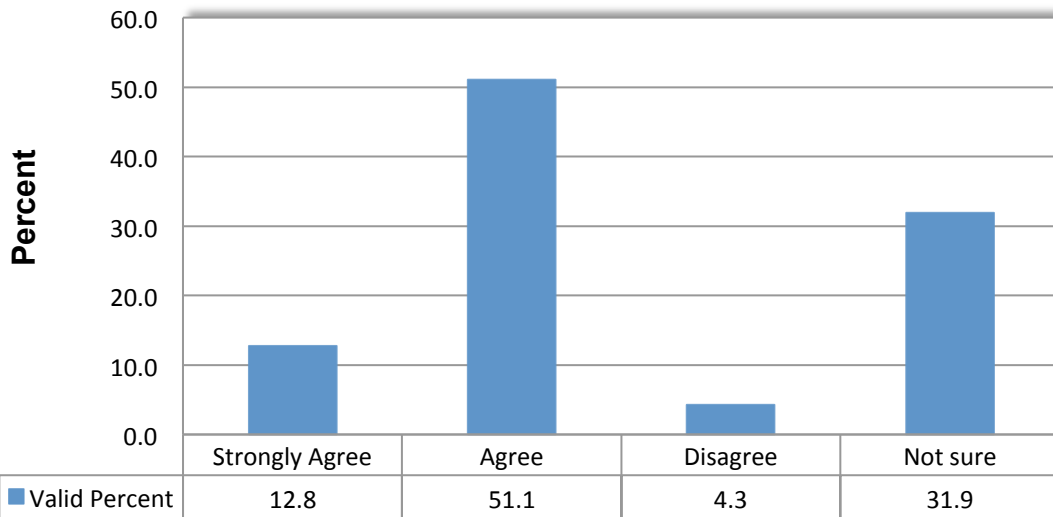
### Since attending BGC my child has acquired a greater ability to make friends



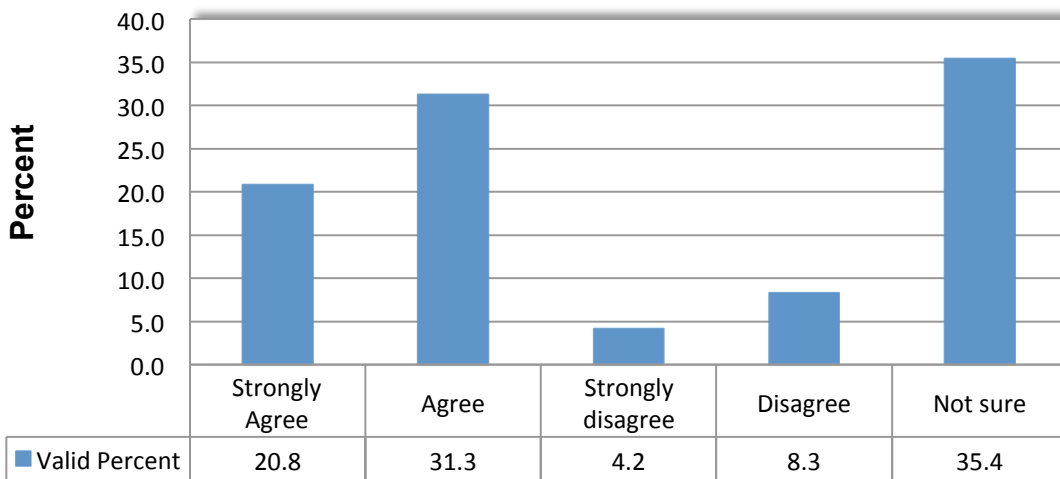
### Since attending BGC my child is showing more confidence in him/herself



**Since attending BGC my child is demonstrating a greater ability to get along in the family**



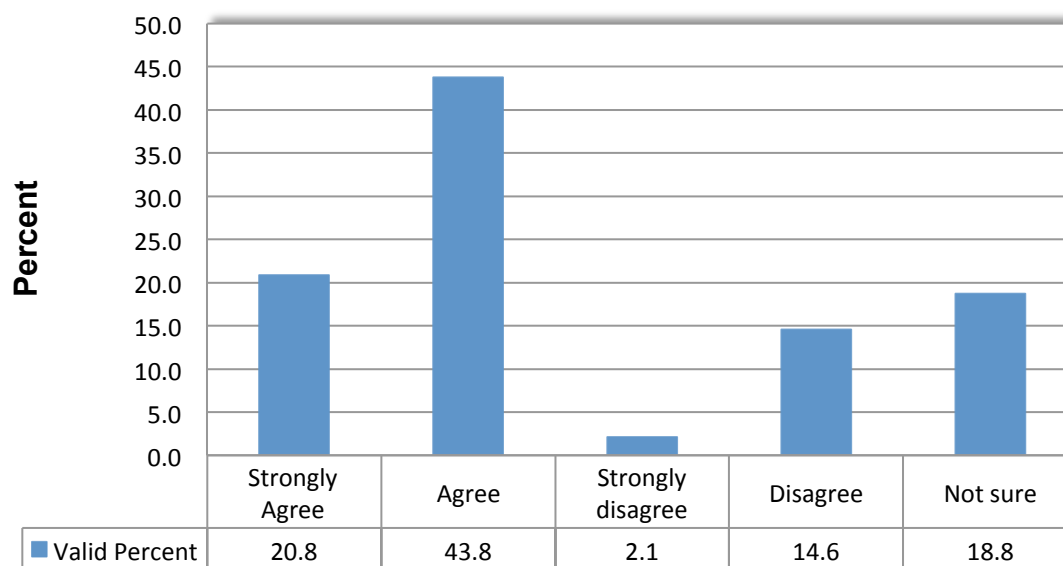
**Since attending BGC my child seems more interested in doing volunteer work**



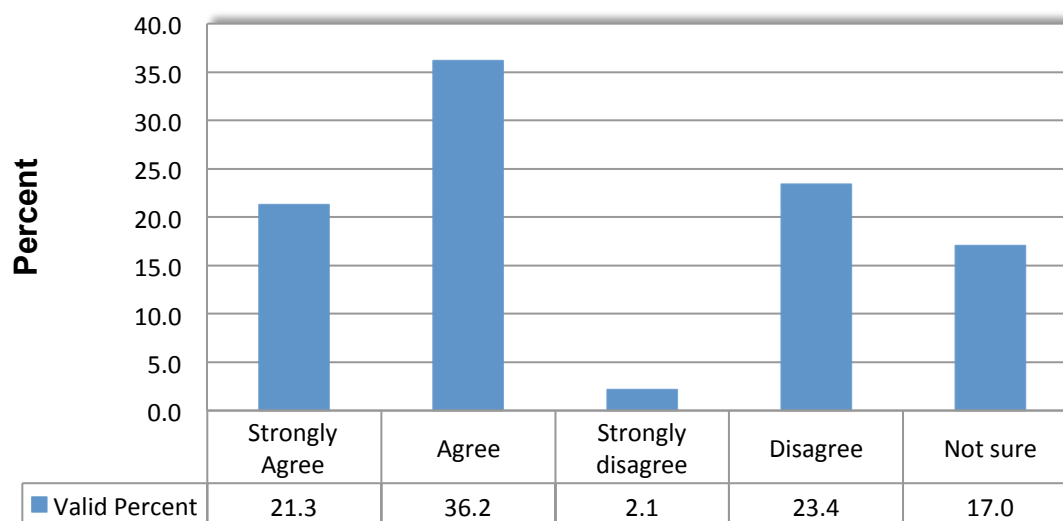
#### 4.4) Impact of Clubs on Academic Performance and Aspiration

Another area in which parents were asked to share their observations regarding changes in their children since attending the clubs considered academic performance and aspirations. Given the important role the clubs play in terms of academic enrichment, it is important to learn from the observations made by parents.

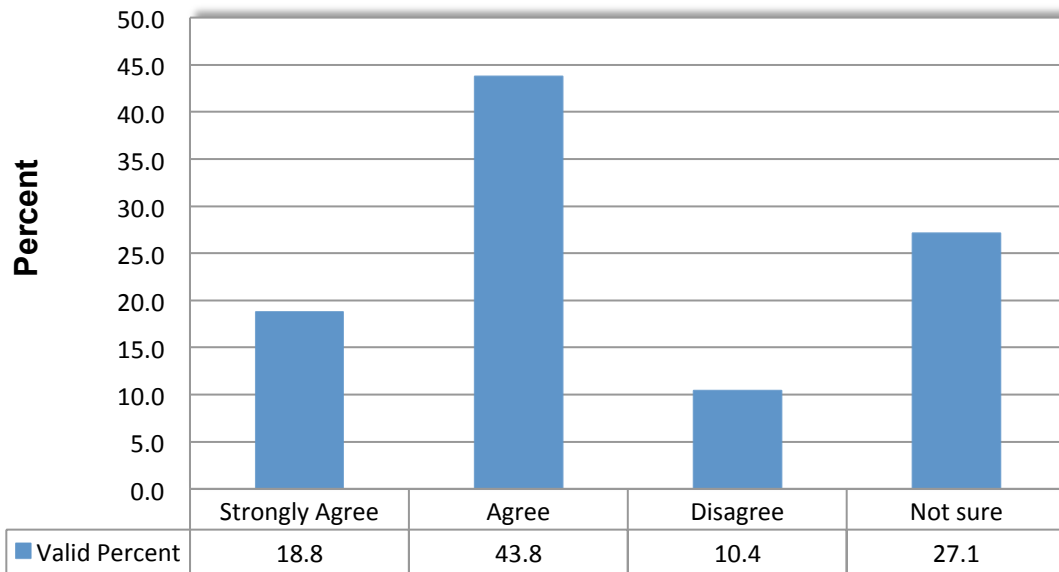
**Since attending BGC my child has shown improvement in his/her school performance**



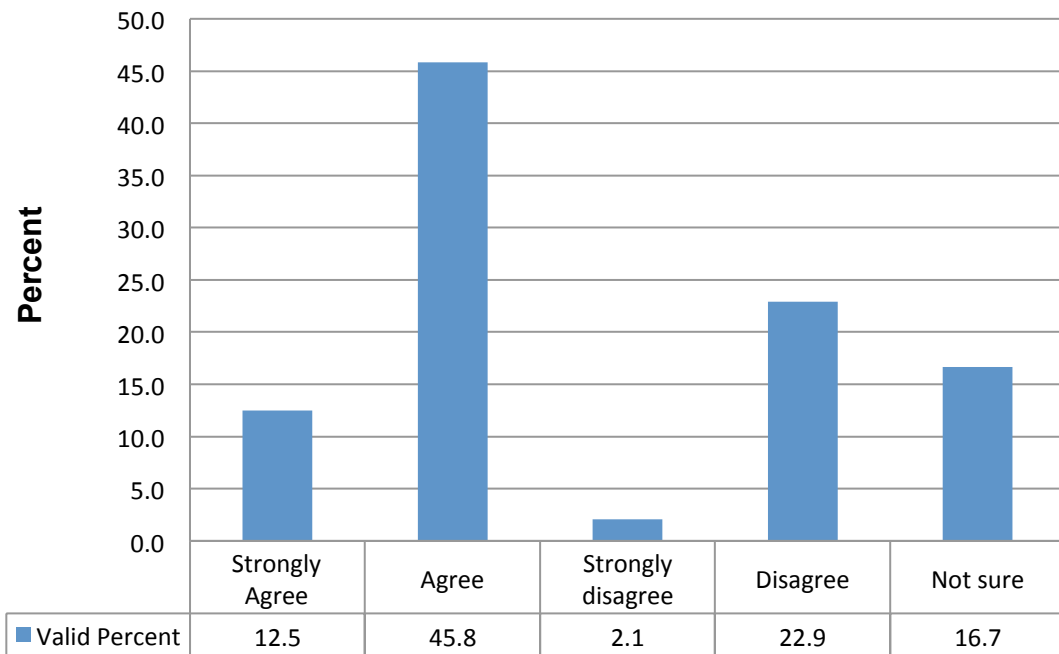
**Since attending BGC my child shows me his/her completed homework more often**



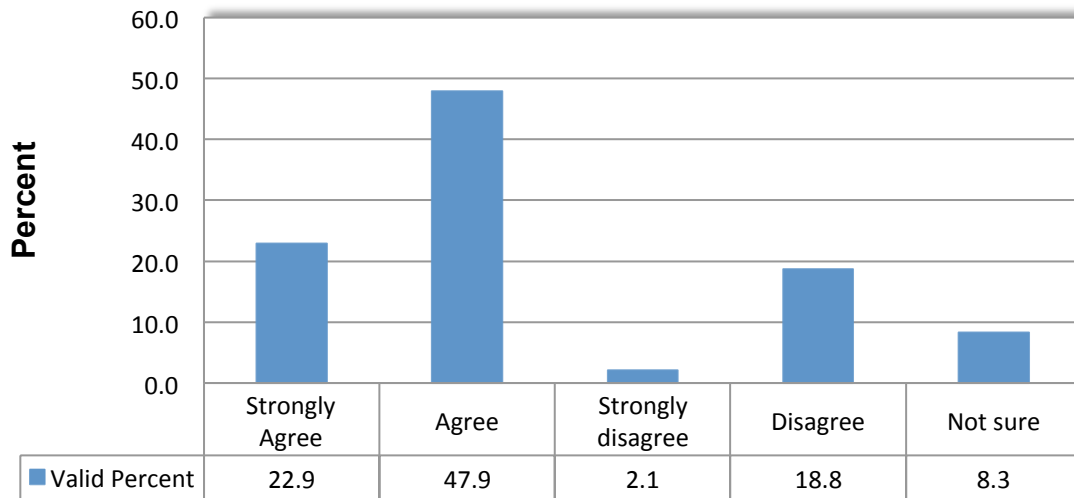
### Since attending BGC my child seems to enjoy going to school more



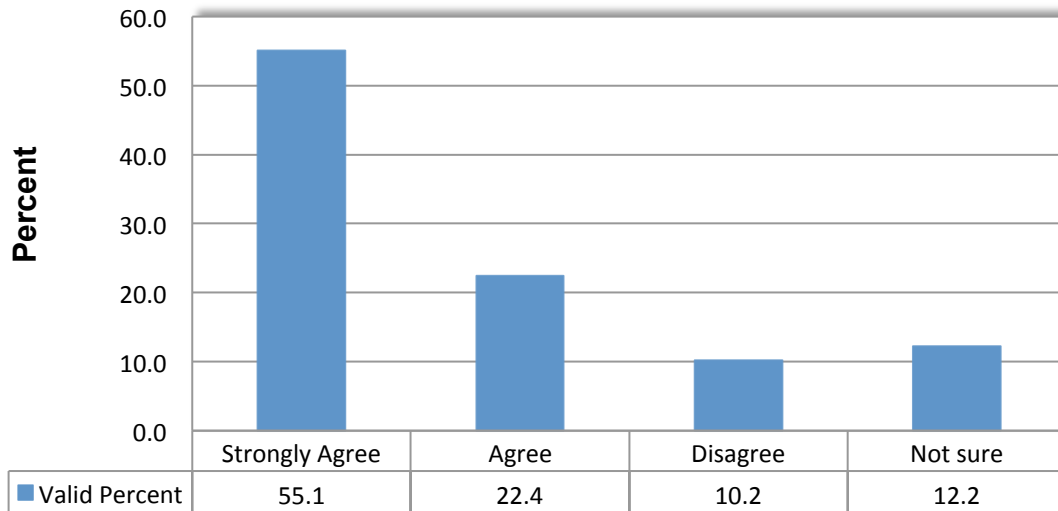
### Since attending BGC my child's grades have improved



**Since attending BGC my child is completing homework assignments more often**

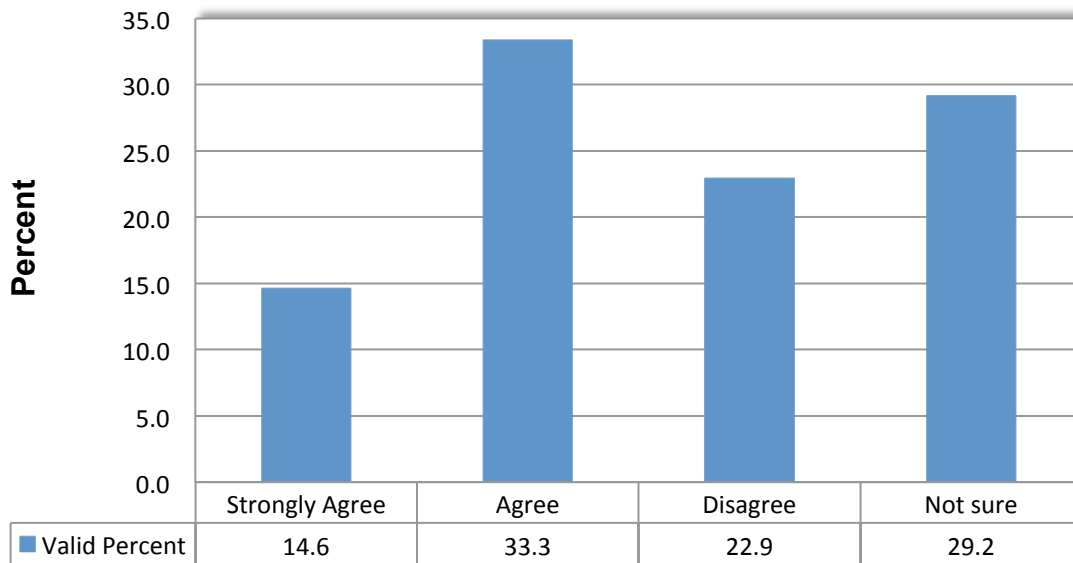


**Based on my experience, my child attends his/her school regularly and has good attendance (missing less than 5 school days during the year)**

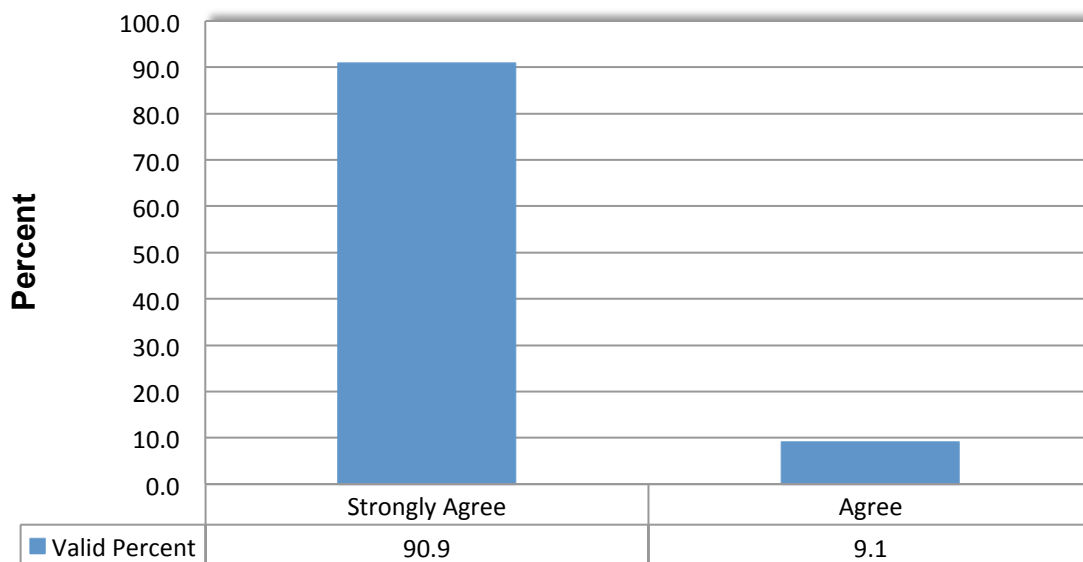




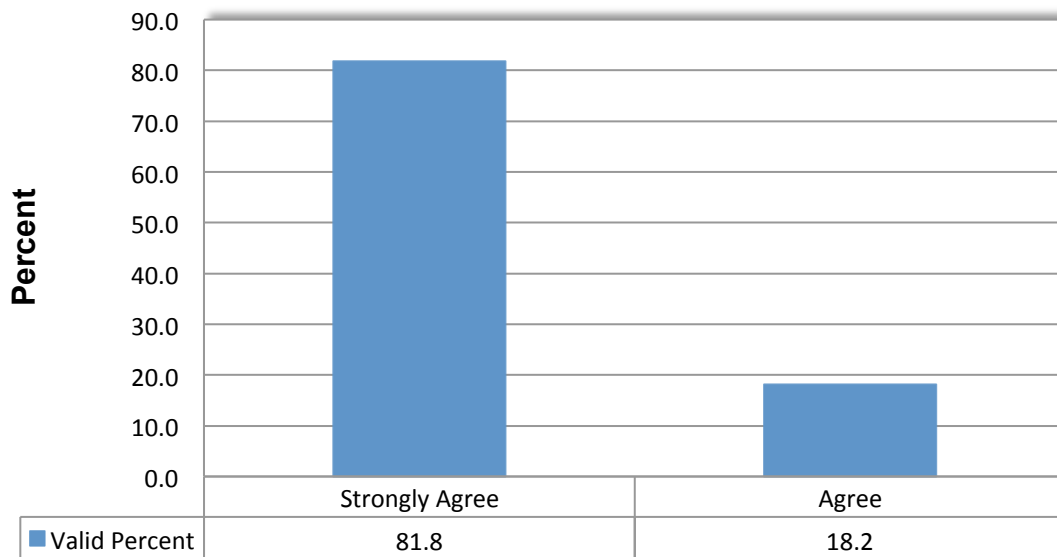
**I believe one of the important reasons that my child attends his/her school regularly is his/her membership and attendance of the Boys & Girls Club**



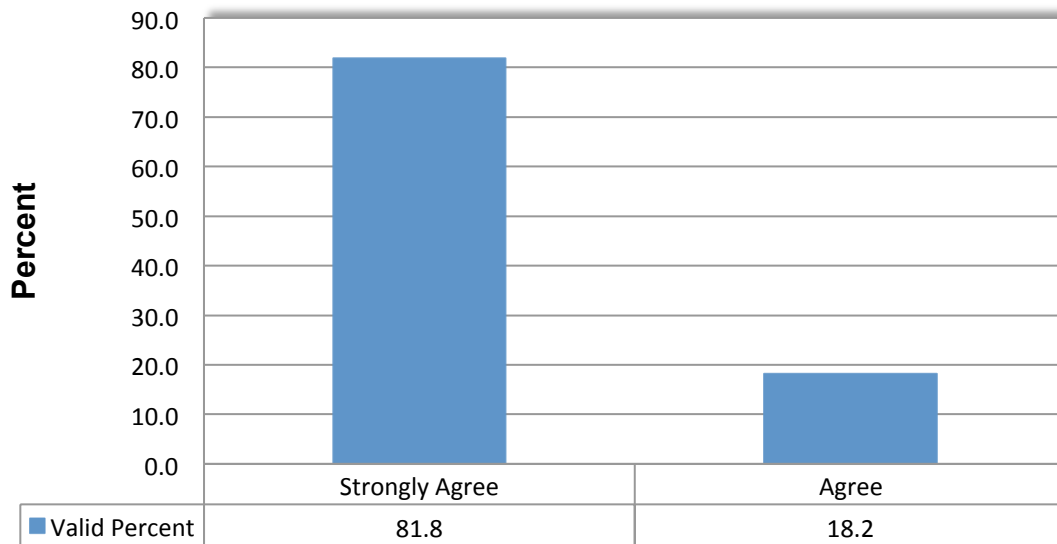
**I am certain that my child will not drop out and will complete high school**



### My child talks about higher education and its importance



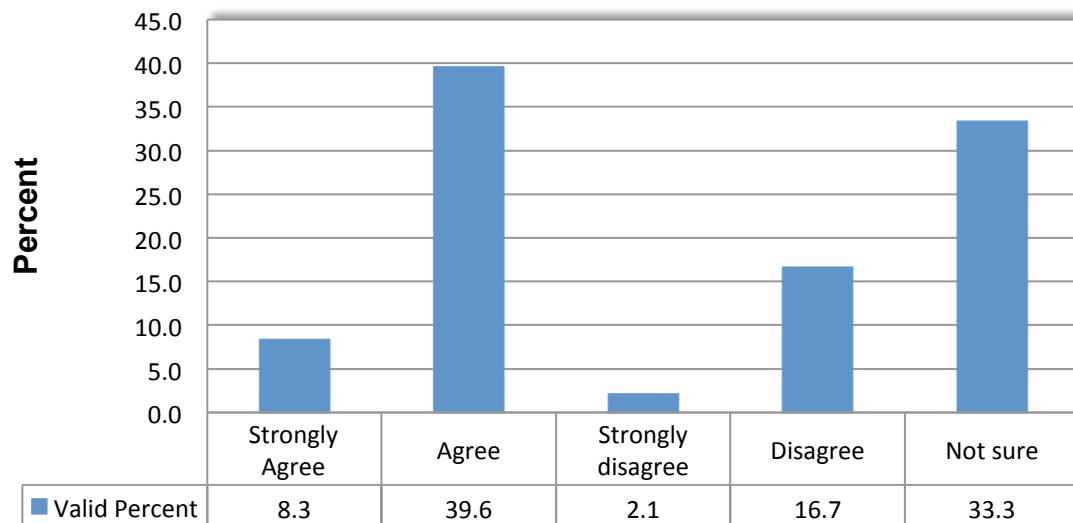
### My child is sure that he/she will attend college after graduating from high school



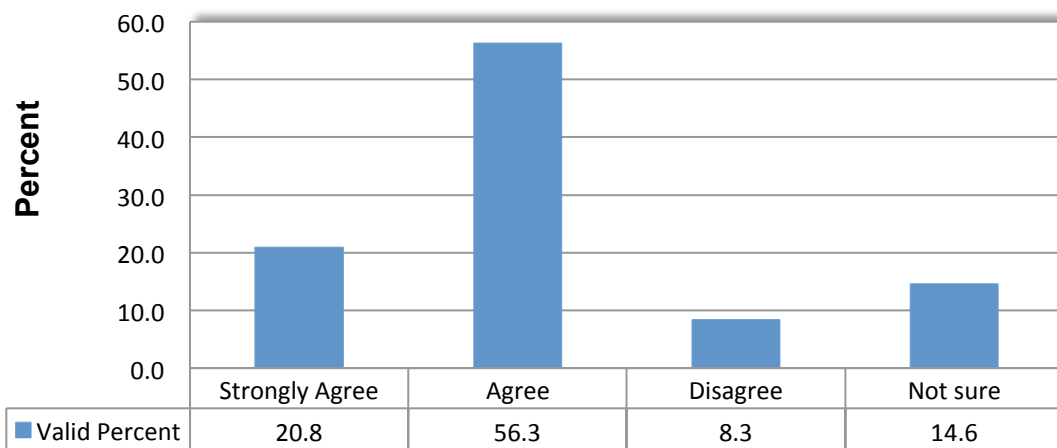
#### 4.5) Club's Impact on Children's Choice of a Better Lifestyle

The final area in which we asked parents to share their observations regarding the impact of the clubs on their children was in regards to the impact of the program on their children's physical activity and nutrition. This section presents the results of these questions from the parents' survey.

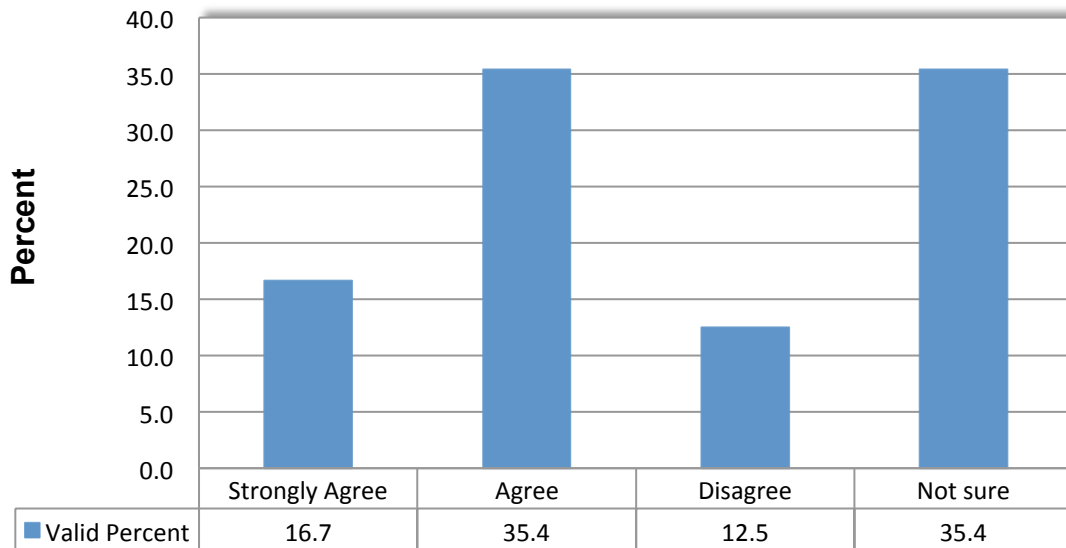
**Since attending the BGC my child makes better choices when it comes to choosing food or drinks**



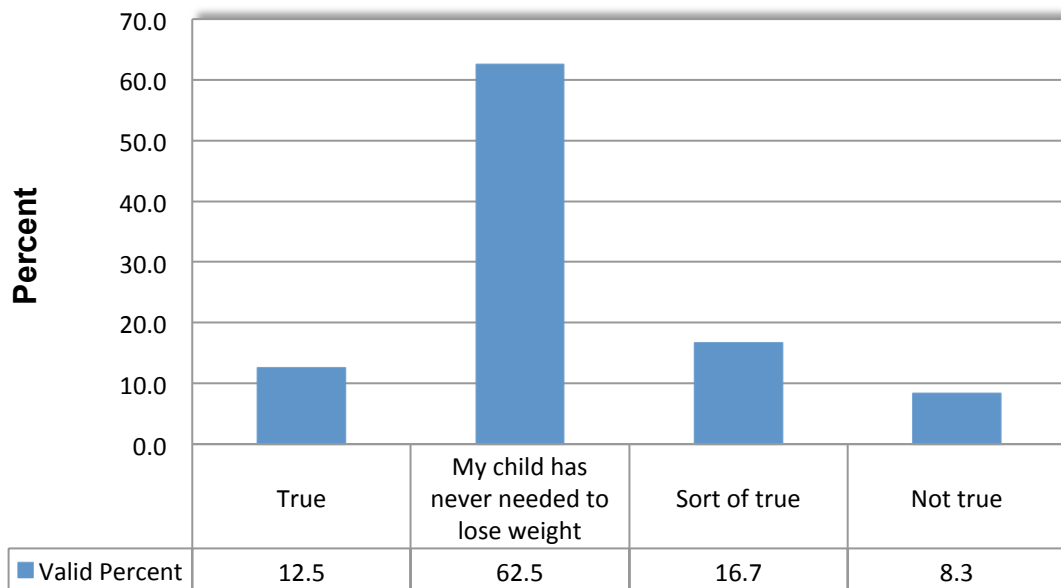
**Since attending the BGC my child shows more interest in doing physical exercise on a regular basis**



**Since attending BGC my child spends an hour or more a day doing exercise when at the club**



**As a result of regular exercise he/she is making progress towards becoming less overweight**

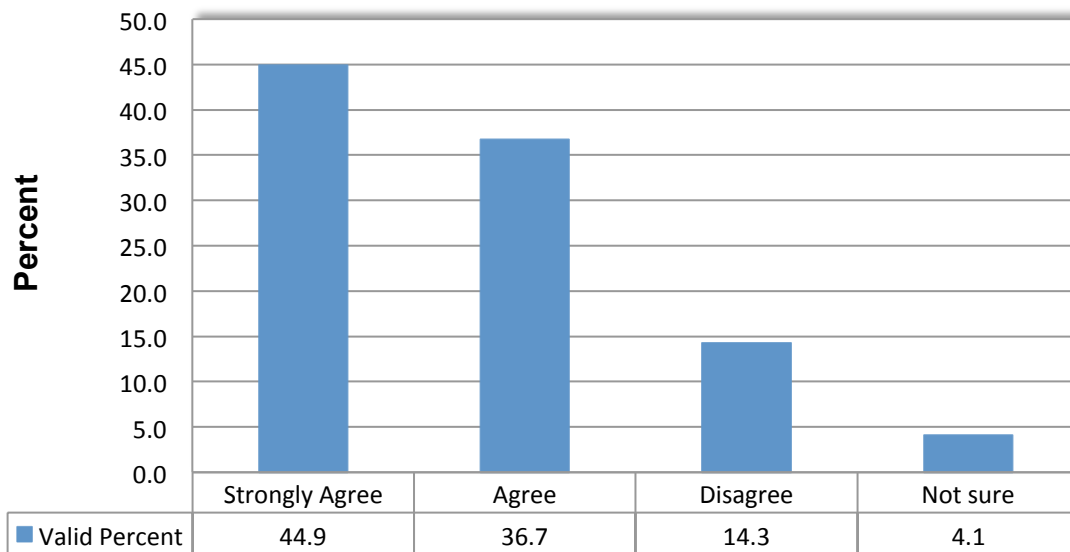


#### 4.6) Impact of Club on Family's Economic Prosperity

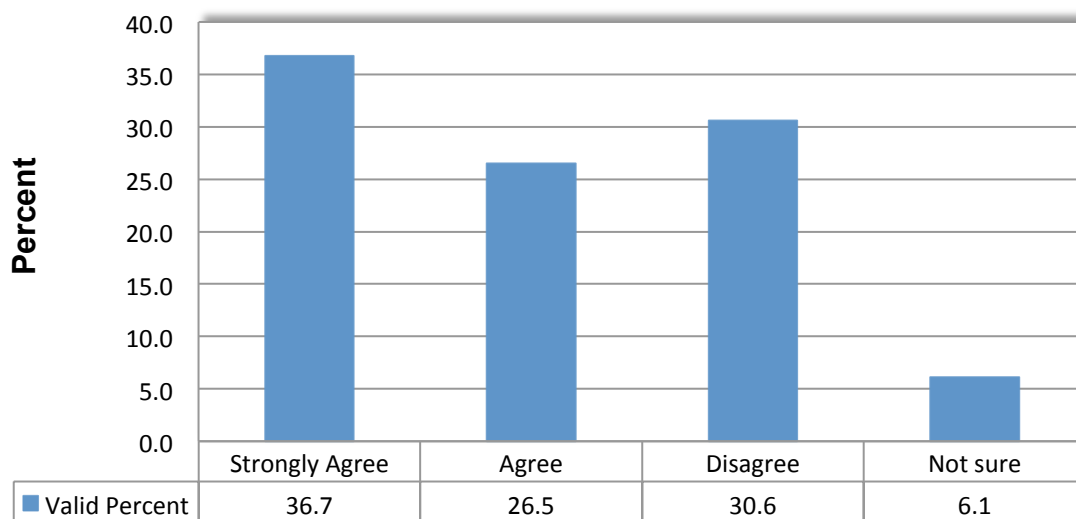
One of the important ways in which the Boys & Girls Clubs help families is by supervising children during the afternoon hours when many parents need to work to earn a living or pursue education to improve their long-term earning potential. By providing quality supervision, the

clubs allow parents to balance their responsibilities as parents with their duties of earning a living to sustain the family. The parent survey included several questions that were designed to determine the extent to which the clubs help parents keep their jobs and/or stay in school.

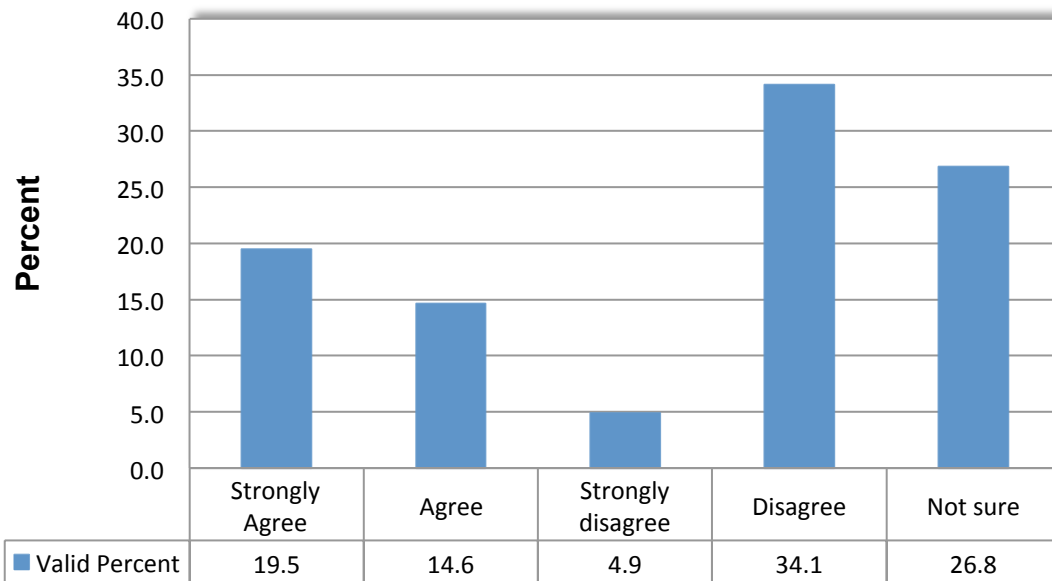
### **Sending my child(ren) to BGC makes it easier for me to keep my job**



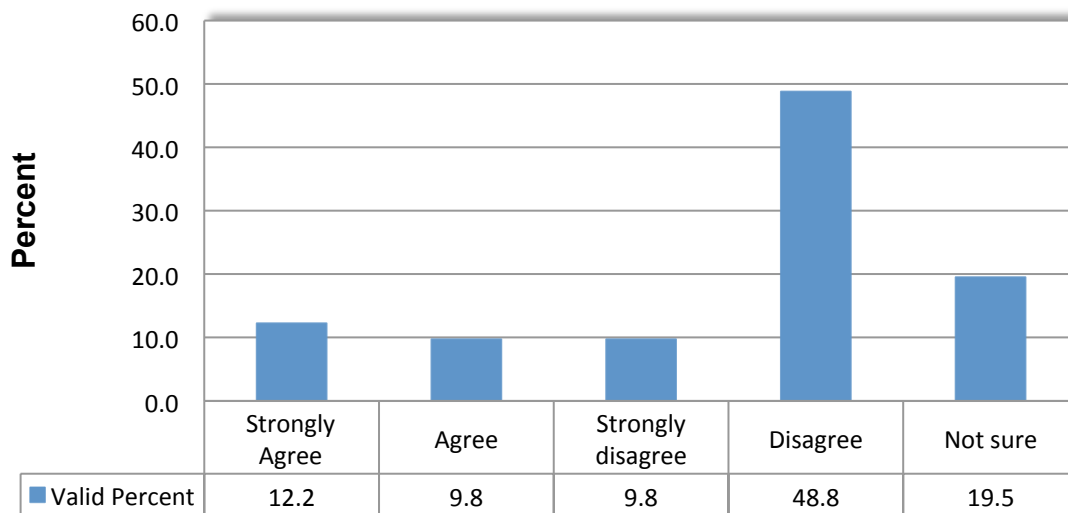
### **Sending my child(ren) to BGC enables me to keep my job**



### Sending my child(ren) to BGC makes it easier for me to go to school



### As a result of sending my child(ren) to BGC I am now attending school to receive a higher degree or certificate that will help me with my career



#### 4.7) Feeling of Safety of Children While at the Club

The Boys & Girls Clubs have earned the trust of parents. An important consideration in earning this trust is the safety of the environment in the clubs. As such, the parent survey asked parents

to assess whether they feel that their children are in a safe environment when they are in the Boys & Girls Clubs.

